



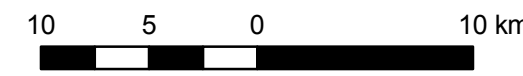
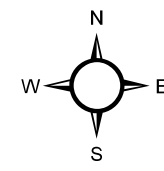


Map 4-2-1 Significant Groundwater Recharge Areas

Upper Thames River Source Protection Area Assessment Report

Legend

-  Source Protection Area Boundary
-  Municipal Boundaries
-  County Boundaries
-  Significant Groundwater Recharge Area



Map created by UTRCA, August 18, 2010.

Base mapping produced under license with the Ontario Ministry of Natural Resources. © 2010.

Source Protection Area Boundary provided by Ontario Ministry of the Environment, 2006.

SGRA: Upper Thames River Source Protection Area Tier 2 Water Budget, Significant Groundwater Recharge Area Technical Memorandum, Upper Thames River Conservation Authority, August, 2010.



**DRINKING WATER
SOURCE PROTECTION**
ACT FOR CLEAN WATER

Thames-Sydenham
and Region



