



Your property is in an Intake Protection Zone

What is an Intake Protection Zone?

Intake Protection Zones are the areas of land and water around municipal water intakes where special care must be taken in the use and handling of potential contaminants.

A spill or a leak in this area may threaten the drinking water supply so quickly that there may not be enough time to warn the system's operator to shut down the water intake.

Wallaceburg Water Treatment Plant

The Wallaceburg Water System is located on Baseline Road in Wallaceburg. The total capacity of the plant is 18,200 m³ and it currently serves a population of 11,800. The plant service area includes residents and commercial users in the town itself and outlying areas of Wallaceburg. The Intake for the Water Treatment Plant is located on the Chenal Ecarte southwest of the treatment plant.

Open Houses

**Wednesday, February 24 or
Thursday, February 25
3:00 p.m. – 7:00 p.m.
Oaks Inn, 80 McNaughton,
Wallaceburg**

Plan to attend one of these Open Houses to learn more about your local Intake Protection Zone and see detailed maps showing what properties are within the zone.

What is a Drinking Water Threat?

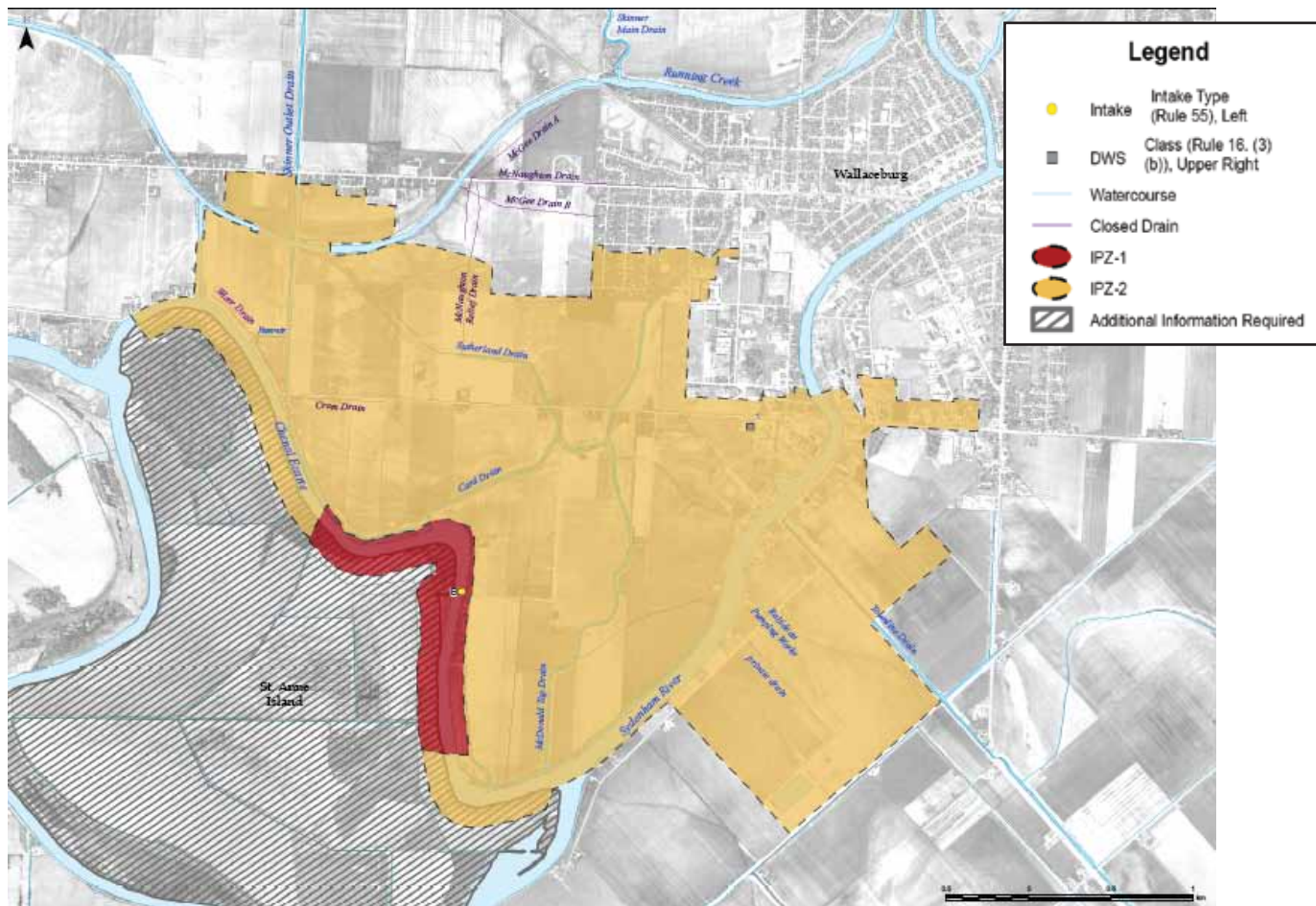
A drinking water threat is an "activity or condition that adversely affects or has the potential to adversely affect the quality or quantity of any water that is or may be used as a source of drinking water". As part of the study of the Wallaceburg Water Treatment Plant Intake Protection Zones, specific threats and areas where potential threats could occur will be identified.

What is a Drinking Water Issue?

Under the Clean Water Act, drinking water quality issues must be identified. A drinking water quality issue is defined to be a physical, chemical, radioactive or microbial (e.g., bacteria) parameter or other pathogenic (disease-causing) organisms shown to deteriorate, or trend towards a deterioration, of raw (untreated) water quality for the purposes of drinking. The parameters which can be considered are identified in the Safe Drinking Water Act. The area and the activity contributing to a drinking water quality issue must also be identified.

Identifying issues is a key step in the overall process of protecting drinking water quality. Should an issue be identified, the activities that contribute to this issue become a significant risk and must be dealt with through the source protection plan.

Identifying issues involves a review of raw (untreated) water quality data, consideration of existing water treatment plant capabilities to deal with any potential problems and discussions with the plant operating authority.



Intake Protection Zone 1 (red)

Intake Protection Zone 1 (IPZ-1) is considered the most vulnerable to any contaminant of concern that may be released, because of its close proximity to the intake. Any contaminants released in this zone have the greatest likelihood of adversely affecting the raw (untreated) water and the intake.

Intake Protection Zone 2 (yellow)

Intake Protection Zone 2 (IPZ-2) accounts for the influence of shore, streams, and rivers that are known or have the potential to directly impact the water quality at the intake. This area is considered vulnerable as any contaminant that is spilled in this zone has a high probability of reaching the intake and adversely affecting the water quality. This zone was determined based on a two-hour travel time. This means that a contaminant could reach the intake in two hours should a spill or leak occur in this zone.



For more information contact your local Conservation Authority or visit our website



519-354-7310



519-245-3710



519-451-2800



Made possible through the support of the Government of Ontario.

www.sourcewaterprotection.on.ca