

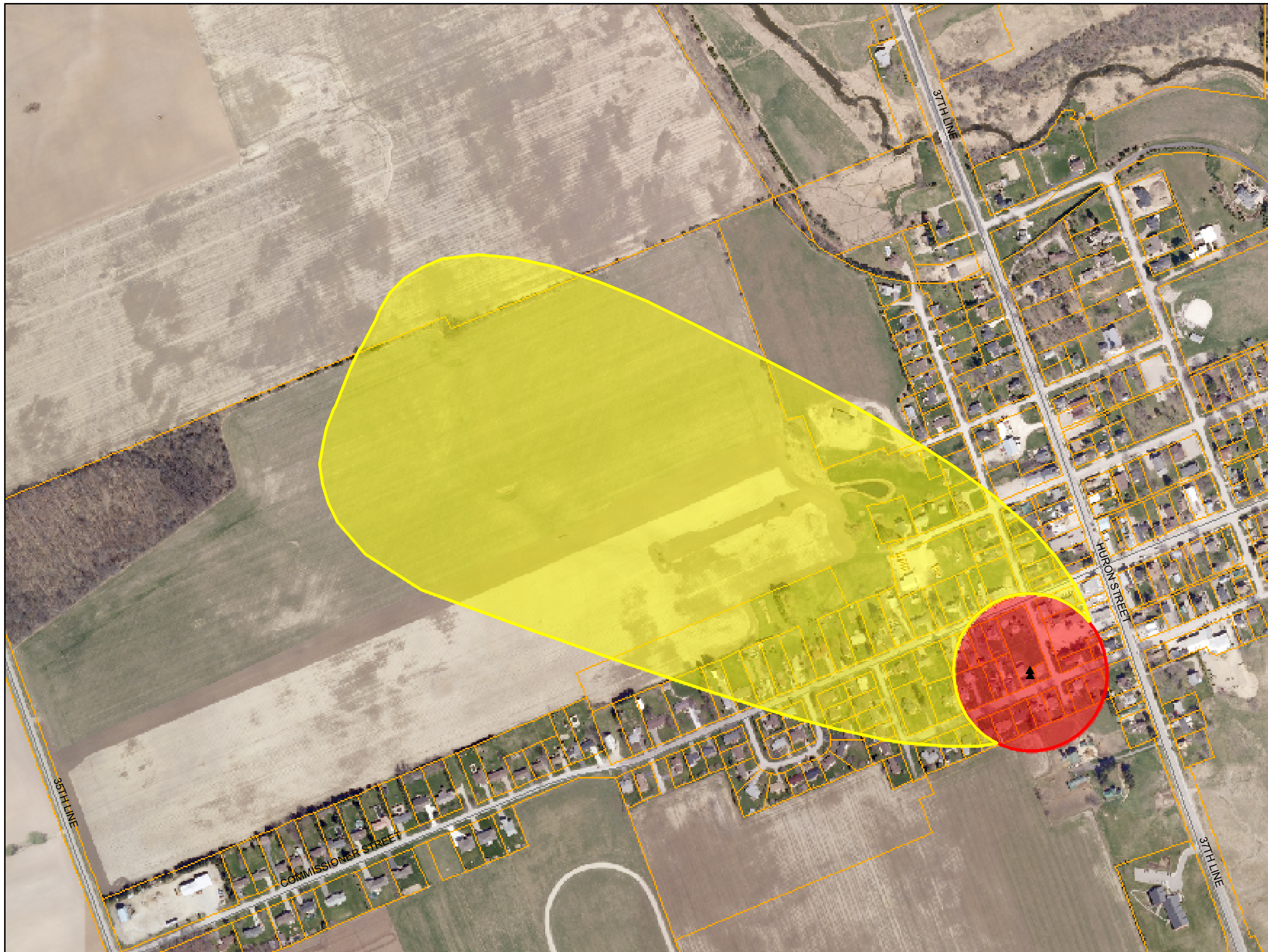
# Embrow

## Legend

▲ Municipal Active Wells - Nov. 2007

### ODWSP Eligible Areas

- 100 m Capture Zone of Well
- 2 Year Time of Travel
- Property - Parcel Boundaries



Aerial Photography taken 2006 - © First Base Solutions  
Property Information - UTRCA under License with the Ontario Ministry of Natural Resources  
ODWSP Eligible Areas - Entered into the County of Oxford Official Plan on Dec. 10, 2008.

Capture zones and time of travel boundaries depicted in these maps are to be used for the sole purpose of delivering the ODWSP. The zones represented in these maps are interim products resulting from the delineation of the Well Head Protection Areas (WHPA) and Intake Protection Zones (IPZ) being developed in the Thames-Sydenham and Region as required by the Clean Water Act.