



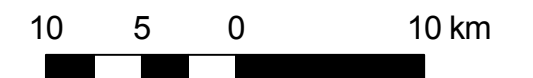
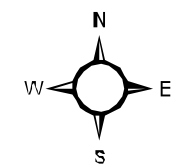


**Map 4-8
Significant Groundwater
Recharge Areas (SGRA)**

**Lower Thames Valley
Source Protection Area
Assessment Report**

Legend

-  Source Protection Area Boundary
-  Municipal Boundaries
-  County Boundaries
-  SGRA



Map created by LTVCA, April 26, 2011.

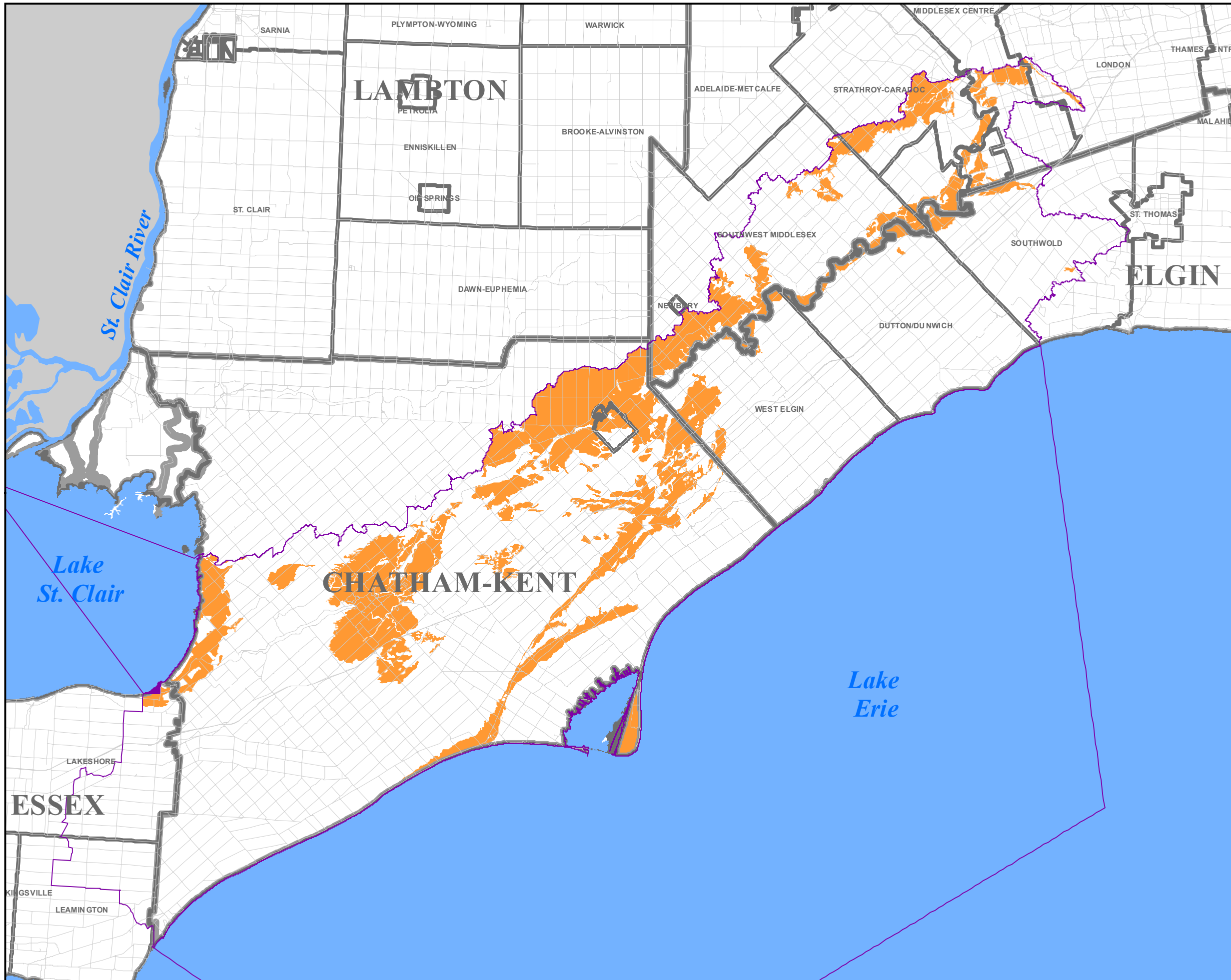
Base mapping produced under license with the Ontario Ministry of Natural Resources. © 2011.

Source Protection Area Boundary provided by Ontario Ministry of the Environment, 2006.

SGRA; Thames-Sydenham & Region Tier 1 Water Budget, April 2011.

DRINKING WATER SOURCE PROTECTION Thames-Sydenham and Region





Map 7-3d
Livestock Density within
Significant Groundwater
Recharge Areas (SGRA)

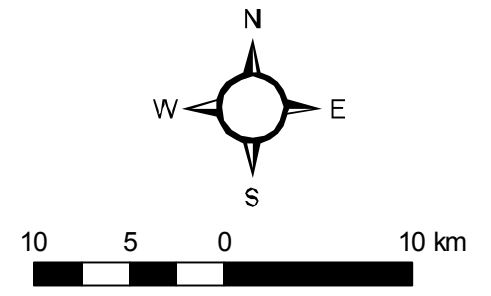
Lower Thames Valley
Source Protection Area
Assessment Report

Legend

- Roads
- Municipal Boundaries
- County Boundaries
- Source Protection Area

Livestock Density
NU/acre

- 0.00 - 0.50
- 0.51 - 1.00
- Greater than 1.00



Map created by LTVCA, April 26, 2011.

Base mapping produced under license with the Ontario Ministry of Natural Resources. © 2011.

Source Protection Area Boundary provided by Ontario Ministry of the Environment, 2006.

Livestock Density, LTVCA, 2011.
 Livestock Density calculated only for those areas where an associated threat can exist; vulnerability score 6 or greater.

DRINKING WATER SOURCE PROTECTION
 2011 2011 2011 2011 2011

Thames-Sydenham and Region