


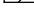


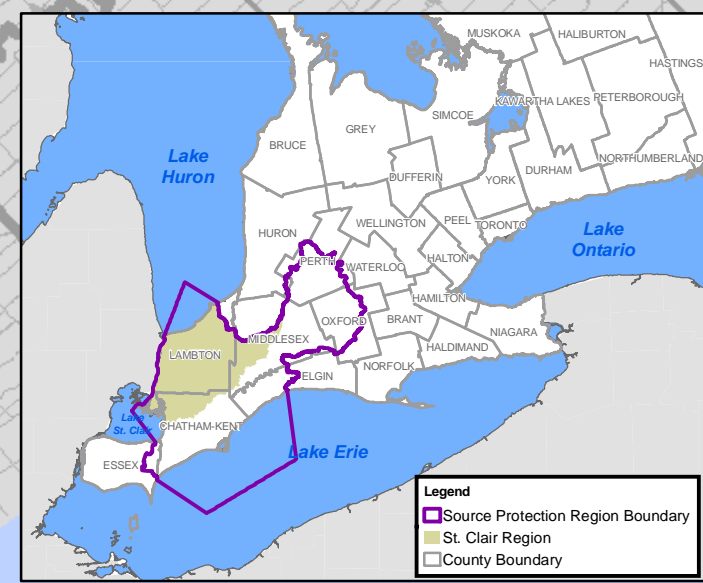
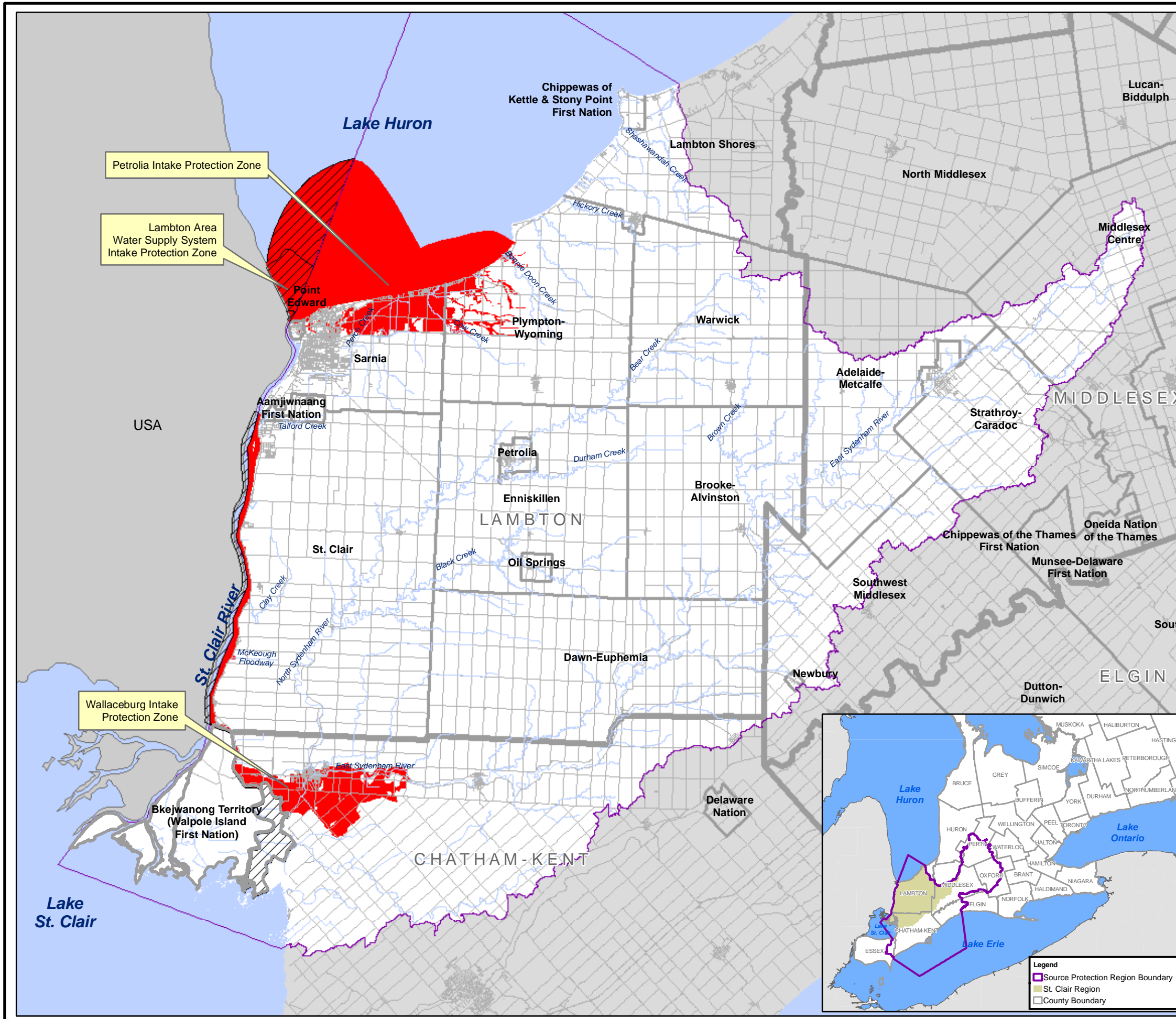
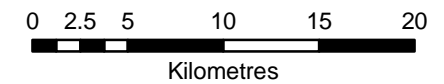
**Map 4-1  
Vulnerability Overview -  
Intake Protection Zones**

**St. Clair Region  
Source Protection Area  
Assessment Report**

**Legend**

-  St. Clair Region Source Protection Area
-  Municipal Boundaries
-  Intake Protection Zone
-  Area beyond the current jurisdiction of this assessment. Additional information required.

2



Map created by SCRCA, May 6, 2011.  
 Base mapping produced under license with the Ontario Ministry of Natural Resources. © 2011.  
 Source Protection Area Boundary provided by Ontario Ministry of the Environment, 2006.  
 Lambton Area Water Supply System and Petrolia Intake Protection Zones 1 & 2 provided by R.V. Anderson and Associates, November 2009.  
 Wallaceburg Intake Protection Zones 1 & 2 provided by Stantec Consulting, February 2010.  
 Intake protection Zone 3 provided by Baird & Associates, April 28, 2011.

**DRINKING WATER SOURCE PROTECTION**  
ACT FOR CLEAN WATER

**Thames-Sydenham & Region**

**UPPER THAMES RIVER CONSERVATION AUTHORITY**















