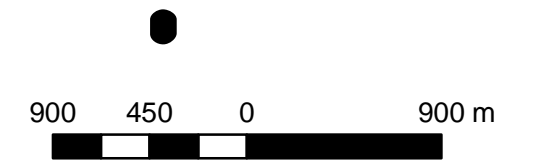


**Map 4-1-16a
Thamesford
Wellhead Protection Area
(WHPA-E)**

**Upper Thames River
Source Protection Area
Assessment Report**



Legend

- Wells (Groundwater Under Direct Influence)
- Watercourse
- Wellhead Protection Area (Outward Extent WHPA-D)
- Wellhead Protection Area (Vulnerability Score)**
- WHPA-E (6.3)

Map created by UTRCA, May 12, 2011.

Base mapping produced under license with the Ontario Ministry of Natural Resources. © 2011.

WHPA-E: WHPA-E and F Delineation and Vulnerability Assessment Thamesford, Woodstock and Tillsonburg Municipal Water Supplies Phase #1 Report (Draft), March 1, 2011. Corporation of Oxford County 11-4459. Dillon Consulting Limited,

Wellhead - Upper Thames River Source Protection Beachville, Hickson, Innerkip and Thamesford Well System Threats Assessment, County of Oxford, Prepared by the County of Oxford, Community and



Thames-Sydenham and Region



UPPER THAMES RIVER
CONSERVATION AUTHORITY

