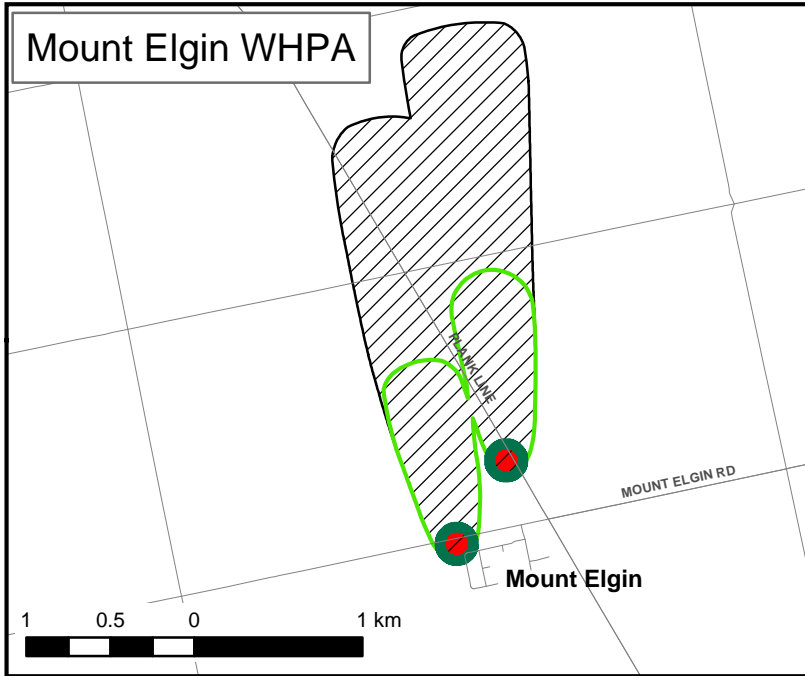
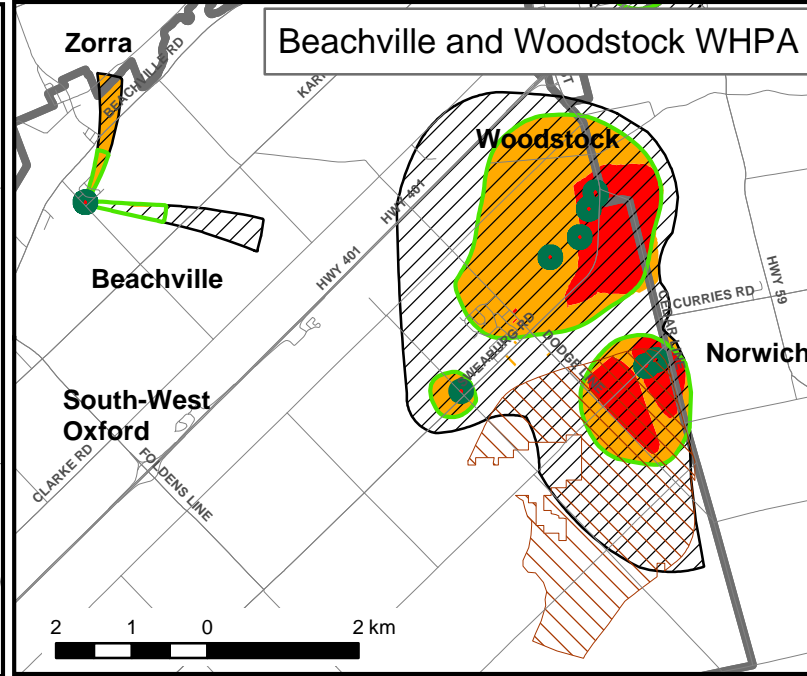


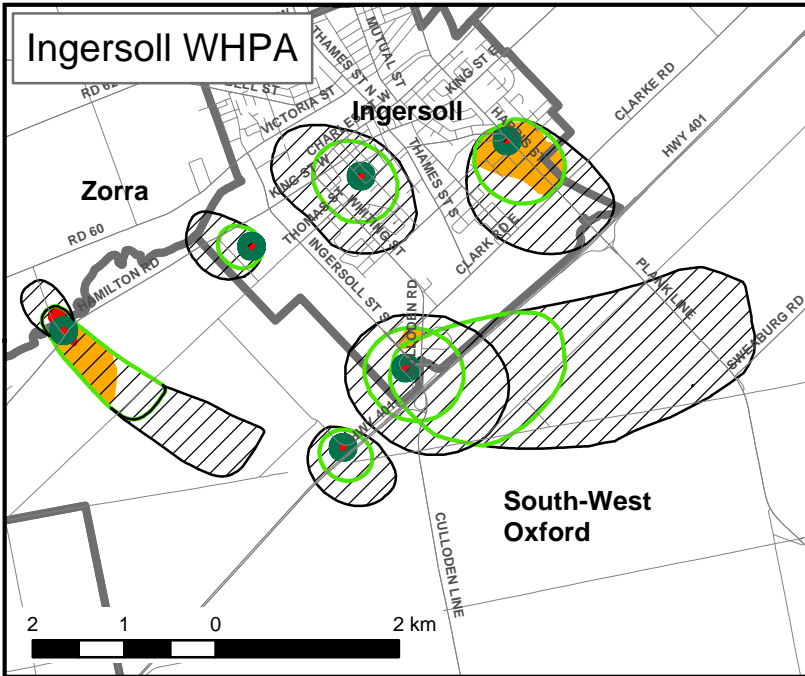
Mount Elgin WHPA



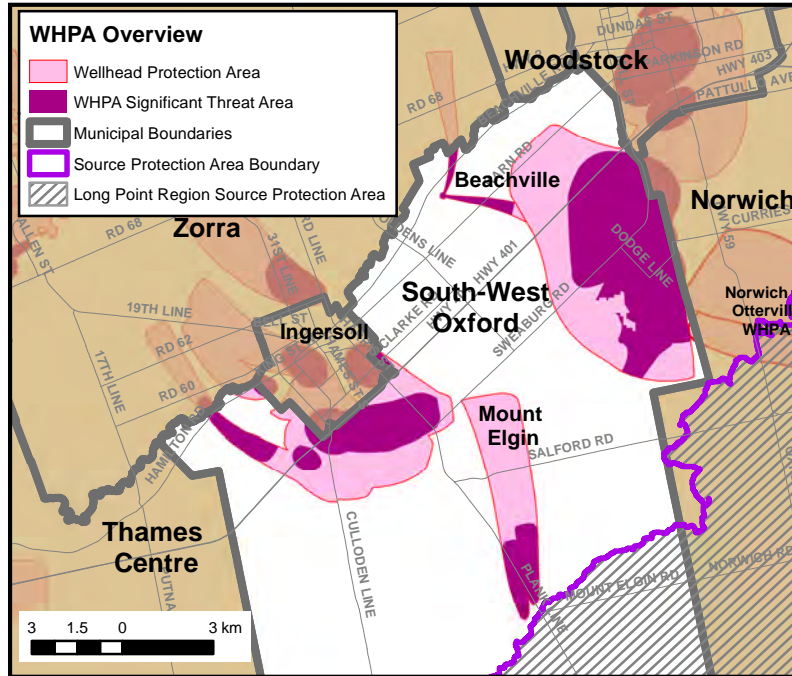
Beachville and Woodstock WHPA



Ingersoll WHPA



WHPA Overview

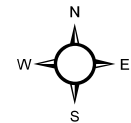


Map 2-1-3 South-West Oxford Wellhead Protection Area (WHPA) Significant Threat Policy Applicability Area

Thames-Sydenham and Region Source Protection Plan

Legend

- Municipal Boundaries
- Significant Threat Areas**
- WHPA-A
- WHPA-B
- WHPA-C
- DNAPL Policy Area**
- WHPA-A,B,C
- Vulnerability Score**
- 8
- 10
- Issue Contributing Area (ICA)**
- ICA



Map created by UTRCA, October 6, 2014.

Base mapping produced under license with the Ontario Ministry of Natural Resources, © 2012.

Source Protection Area Boundary provided by Ontario Ministry of the Environment, 2006.

Wellhead Protection Areas and Vulnerability Assessment - as contained in the approved Upper Thames River Source Protection Area - Amended Proposed Assessment Report Revised - August 12, 2011, including Swearburg Area Groundwater Vulnerability Amendment, Technical Memorandum, ARL Groundwater Resources, Ltd, March 24, 2014

Norwich and Otterville Wellhead Protection Areas - as contained in The Updated Assessment Report for the Long Point Region Source Protection Area as approved Feb. 23, 2012.

ICA Reference - Final Tabor 2/4 and Tillsonburg 4/5 Municipal Well Nitrate Contributing Areas,

WHPA Overview

- WHPA Significant Threat Area
- Wellhead Protection Area
- Municipal Boundaries
- Source Protection Area Boundary
- Long Point Region Source Protection Area

Blanford-Blenheim

East Zorra-Tavistock

Woodstock

Norwich

Norwich & Otterville WHPA

South-West Oxford

2 1 0 2 km

Woodstock

Woodstock

Norwich

South-West Oxford

1 0.5 0 1 km

**Map 2-1-4
Woodstock and Norwich
Wellhead Protection Area
(WHPA)
Significant Threat Policy
Applicability Area**

**Thames-Sydenham and Region
Source Protection Plan**

Legend

Municipal Boundaries

Significant Threat Areas

WHPA-A

WHPA-B

WHPA-C

DNAPL Policy Area

WHPA-A,B,C

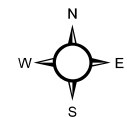
Vulnerability Score

8

10

Issue Contributing Area (ICA)

ICA



Map created by UTRCA, October 8, 2014.

Base mapping produced under license with the Ontario Ministry of Natural Resources, © 2012.

Source Protection Area Boundary provided by Ontario Ministry of the Environment, 2006.

Wellhead Protection Areas and Vulnerability Assessment - as contained in the approved Upper Thames River Source Protection Area - Amended Proposed Assessment Report Revised - August 12, 2011, including Sweaburg Area Groundwater Vulnerability Amendment, Technical Memorandum, ARL Groundwater Resources, Ltd, March 24, 2014

ICA Reference - Final Tabor 2/4 and Tillsburg 4/5 Municipal Well Nitrate Contributing Areas, Oxford ICA Final, Nov. 21, 2013.

Norwich and Otterville Wellhead Protection Areas - as contained in The Updated Assessment Report for the Long Point Region Source Protection Area as approved Feb. 23, 2012.

