


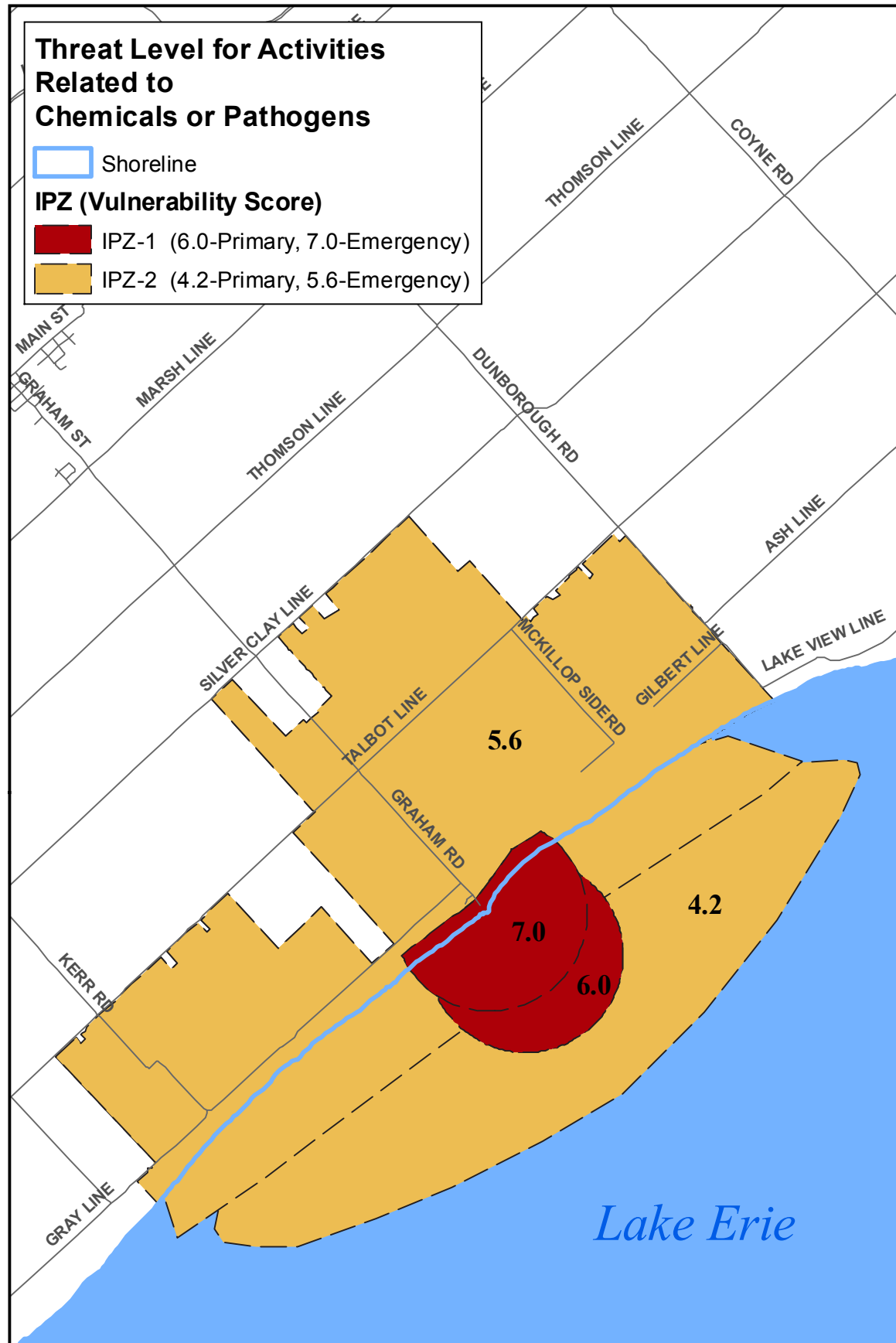





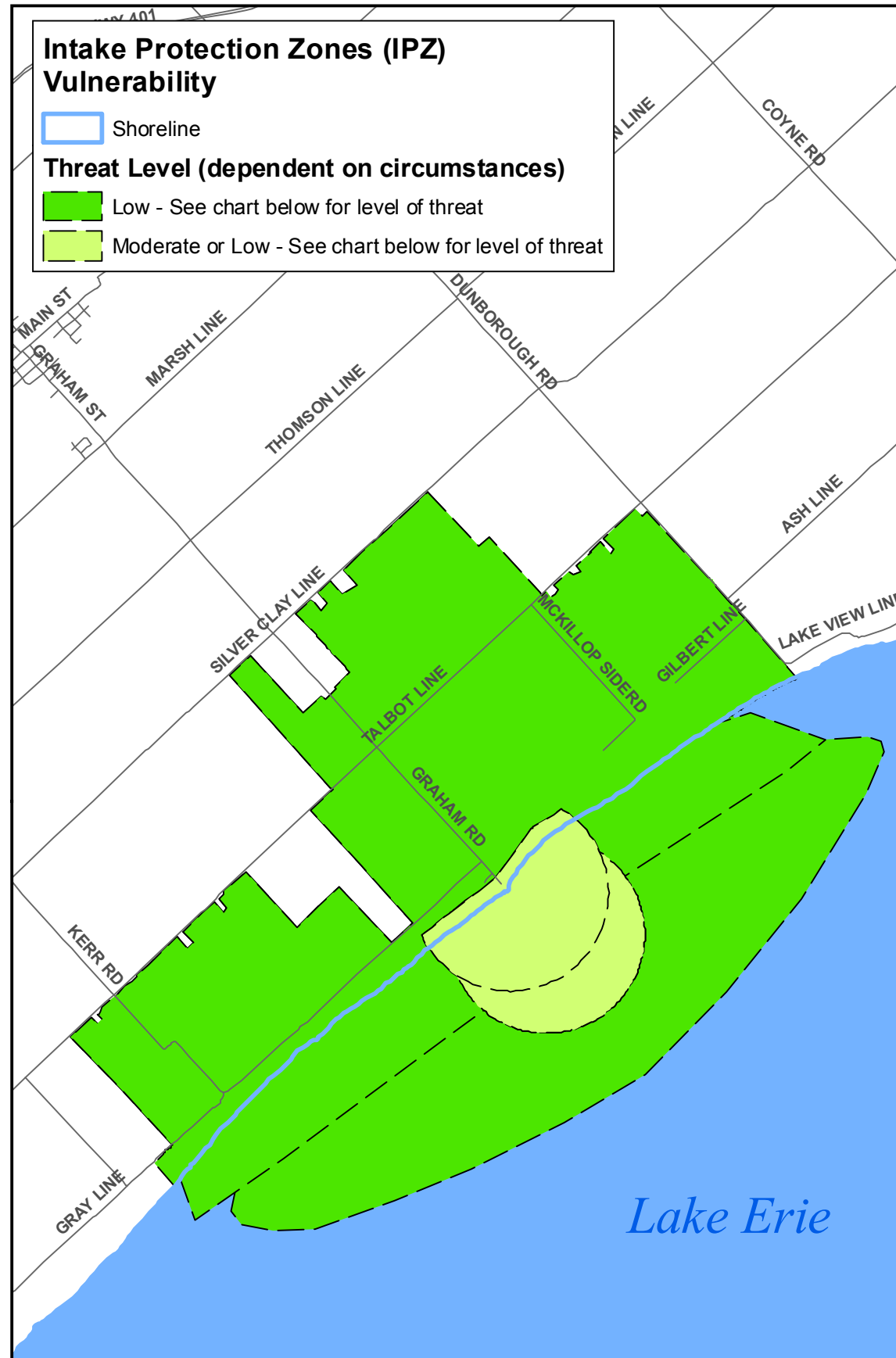
**Threat Level for Activities Related to Chemicals or Pathogens**

-  Shoreline
- IPZ (Vulnerability Score)**
-  IPZ-1 (6.0-Primary, 7.0-Emergency)
-  IPZ-2 (4.2-Primary, 5.6-Emergency)



**Intake Protection Zones (IPZ) Vulnerability**

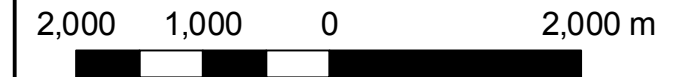
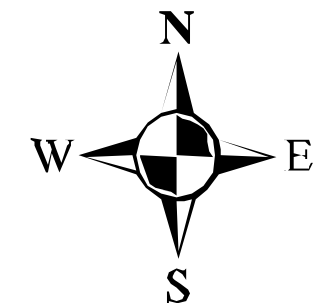
-  Shoreline
- Threat Level (dependent on circumstances)**
-  Low - See chart below for level of threat
-  Moderate or Low - See chart below for level of threat



Vulnerable Area	Vulnerability Score	Significant Threats	Moderate Threats	Low Threats
IPZ-1 Primary	6	No	Yes	Yes
IPZ-2 Primary	4.2	No	No	Yes
IPZ-1 Emergency	7	No	Yes	Yes
IPZ-2 Emergency	5.6	No	No	Yes

**Map 7-7  
West Elgin  
Areas Where Activities  
Are or Would be  
Drinking Water Threats**

**Lower Thames Valley  
Source Protection Area  
Assessment Report**



This map must be reviewed in conjunction with Section 7.2.6

Map created by TSR SPA, November 16, 2010.

Base mapping produced under license with the Ontario Ministry of Natural Resources. © 2010.

Intake Protection Zones - Thames-Sydenham and Region Source Protection Region, Sept. 2009 and as per Part V and VII of the Technical Rules: Assessment Report (MOE, proposed amendments August 2009).

Intake Protection Zones - West Elgin WTP Intake Protection Zone Update. Stantec Consulting Ltd. September 2010.