



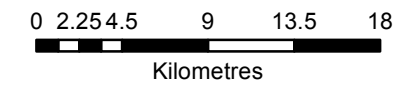
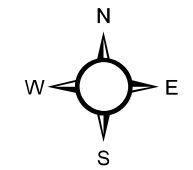


**Map 4-1
Vulnerability Overview -
Intake Protection Zones**

**St. Clair Region
Source Protection Area
Assessment Report**

Legend

-  St. Clair Region Source Protection Area
-  Municipal Boundaries
-  Intake Protection Zone
-  Area beyond the current jurisdiction of this assessment. Additional information required.



Map created by SCRCA, July, 2014.

Base mapping produced under license with the Ontario Ministry of Natural Resources. © 2014.

Source Protection Area Boundary provided by Ontario Ministry of the Environment, 2006.

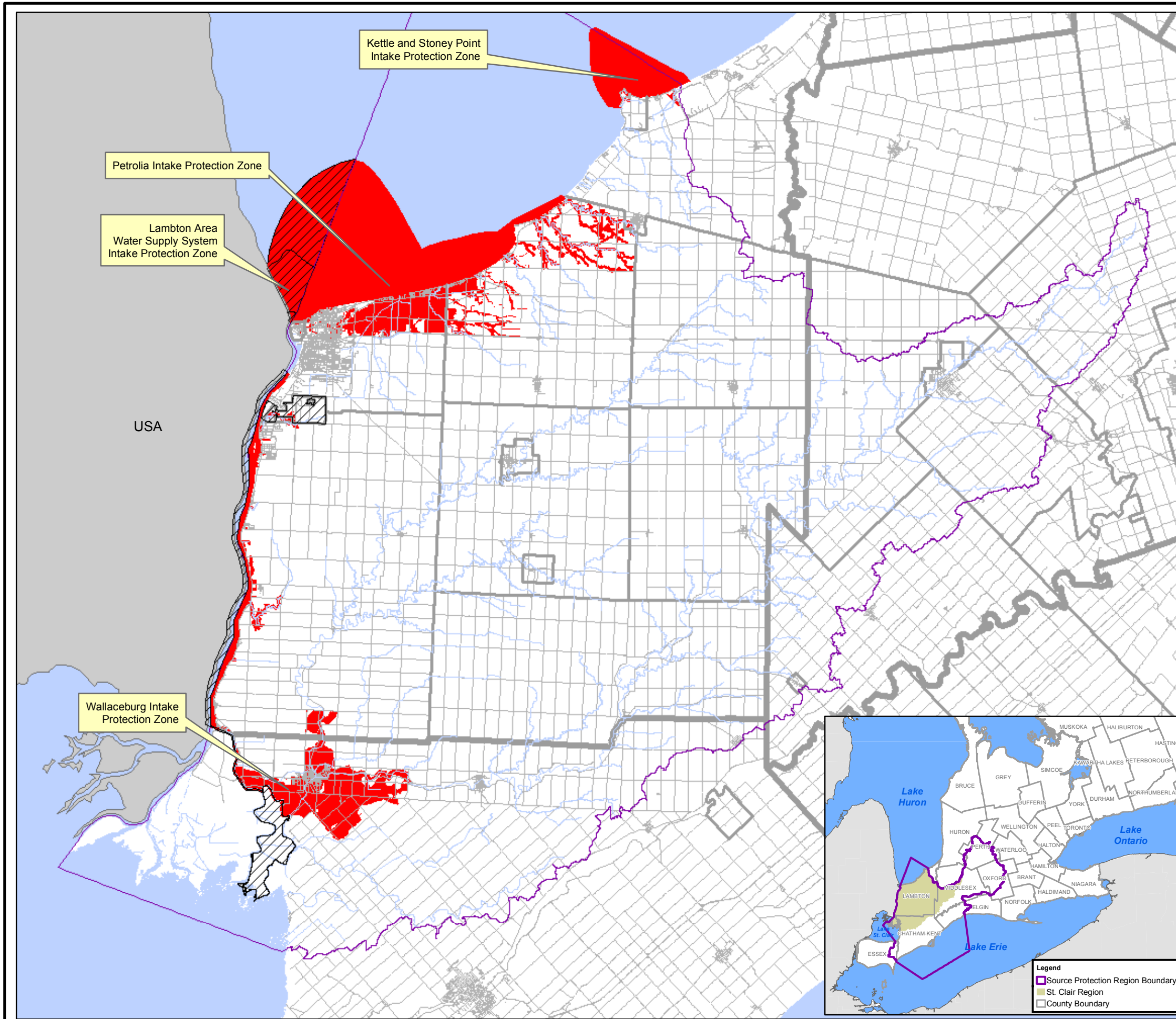
Lambton Area Water Supply System and Petrolia Intake Protection Zones 1 & 2 provided by R.V. Anderson and Associates, November 2009.

Wallaceburg Intake Protection Zones 1 & 2 provided by Stantec Consulting, February 2010.




Kettle and Stoney Point Intake Protection Zones 1 & 2 provided by HCCL and Riggs Engineering, December 2011

Intake protection Zone 3 provided by Baird & Associates, April 28, 2011.

Intake Protection Zone 3 Revisions based on Longitudinal Analysis in Support of IPZ-3 Revision for Petrolia, LAWSS and Wallaceburg Intakes, SCRCA, 2014



Legend

-  Source Protection Region Boundary
-  St. Clair Region
-  County Boundary