


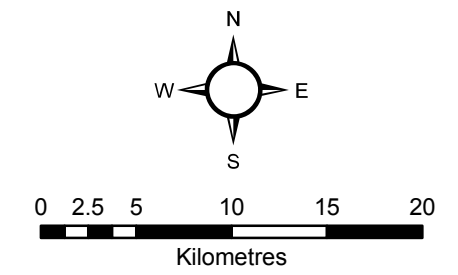


# Map 4-5 Highly Vulnerable Aquifers (HVA)

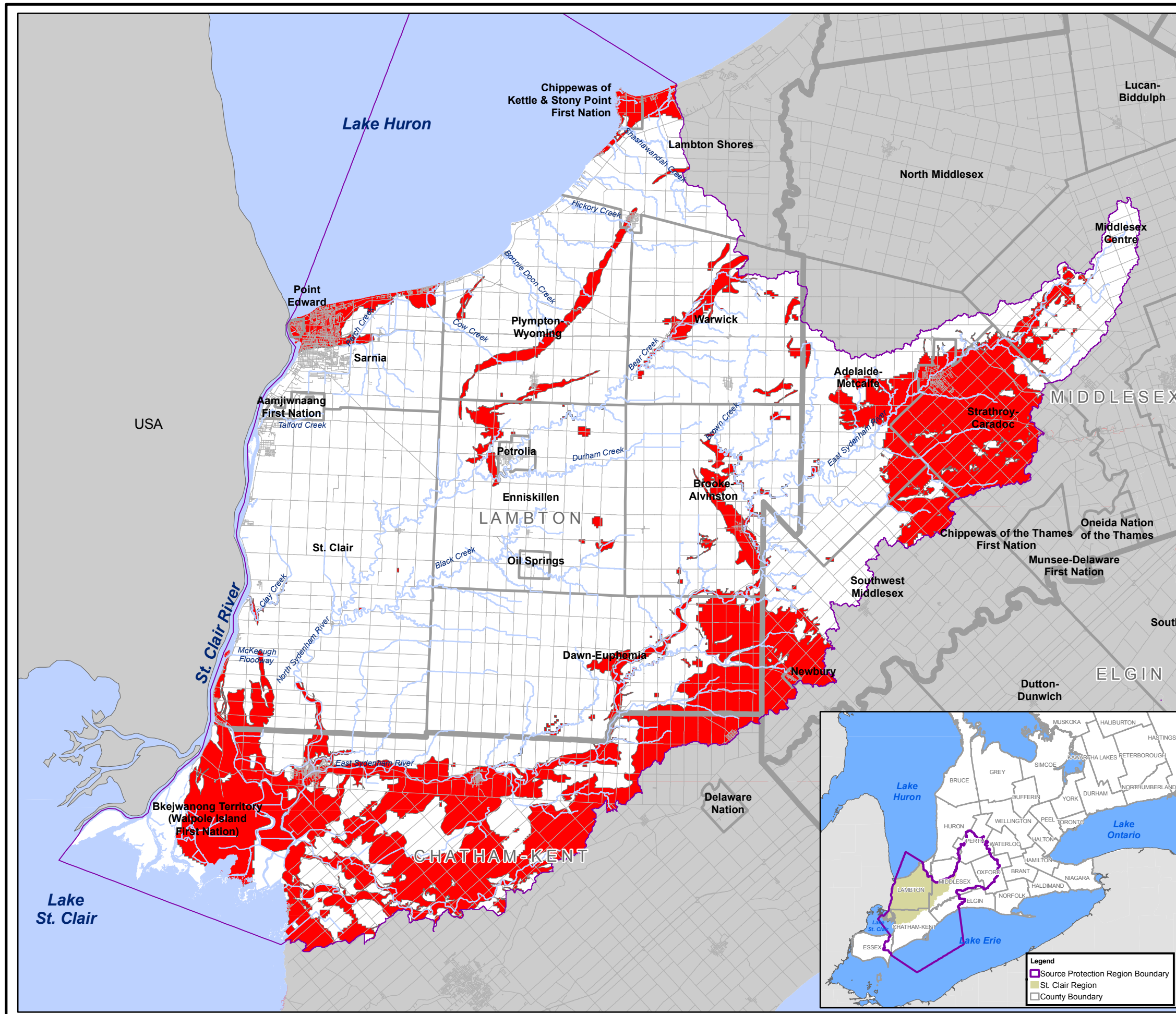
## St. Clair Region Source Protection Area Assessment Report

**Legend**

-  St. Clair Region Source Protection Area
-  Municipal Boundaries
-  Highly Vulnerable Aquifers



0 2.5 5 10 15 20  
Kilometres



Map created by SCRCA, February 25, 2010.  
 Base mapping produced under license with the Ontario Ministry of Natural Resources. © 2010.  
 HVA - Highly Vulnerable Aquifer Identification, (Version 2.1, Draft for Peer Review November 2009), UTRCA.



**DRINKING WATER SOURCE PROTECTION**  
ACT FOR CLEAN WATER

**Thames-Sydenham & Region**

**UPPER THAMES RIVER CONSERVATION AUTHORITY**