


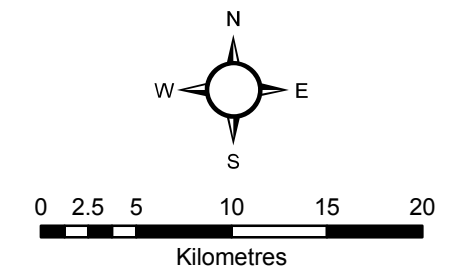


Map 4-7 Significant Groundwater Recharge Areas (SGRA)

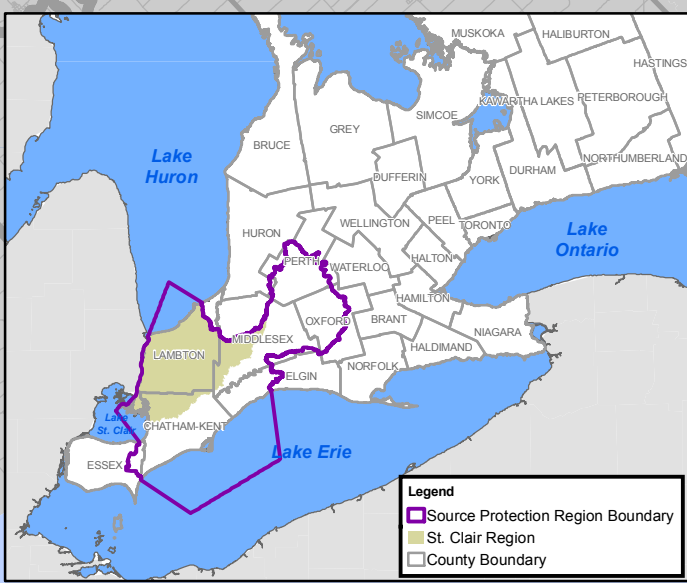
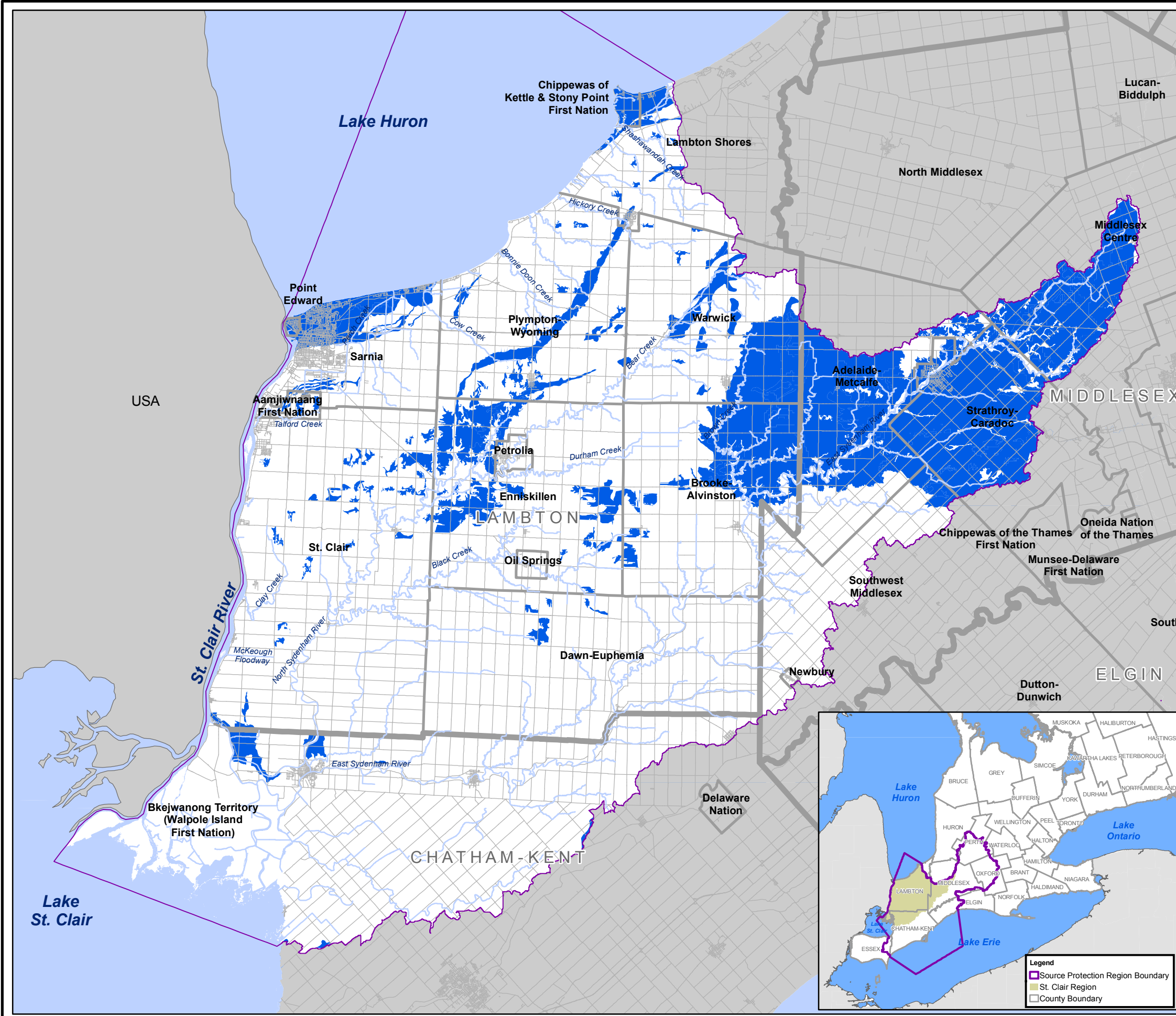
St. Clair Region Source Protection Area Assessment Report

Legend

-  St. Clair Region Source Protection Area
-  Municipal Boundaries
-  Significant Groundwater Recharge Areas



0 2.5 5 10 15 20
Kilometres



Map Created by SCRC, April 29, 2011.
 Base mapping produced under license with the Ontario Ministry of Natural Resources. © 2011.
 SGRA; Thames-Sydenham & Region Tier 1 Water Budget, April 2011.

DRINKING WATER SOURCE PROTECTION
 ACT FOR CLEAN WATER

Thames-Sydenham & Region

UPPER THAMES RIVER CONSERVATION AUTHORITY