






Map 4-8 Significant Groundwater Recharge Areas (SGRA) Vulnerability

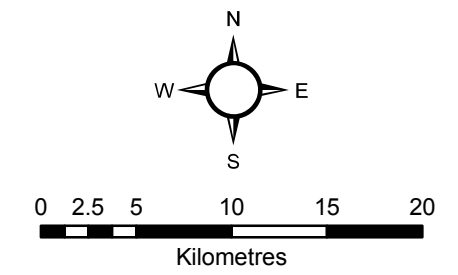
St. Clair Region Source Protection Area Assessment Report

Legend

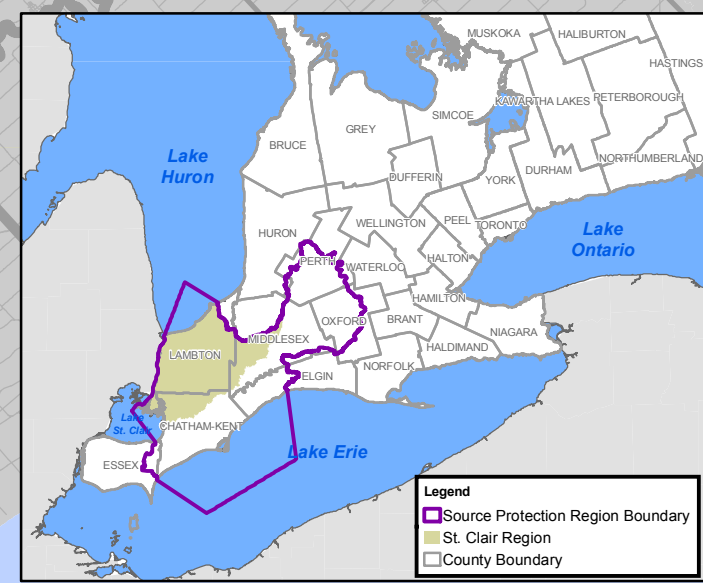
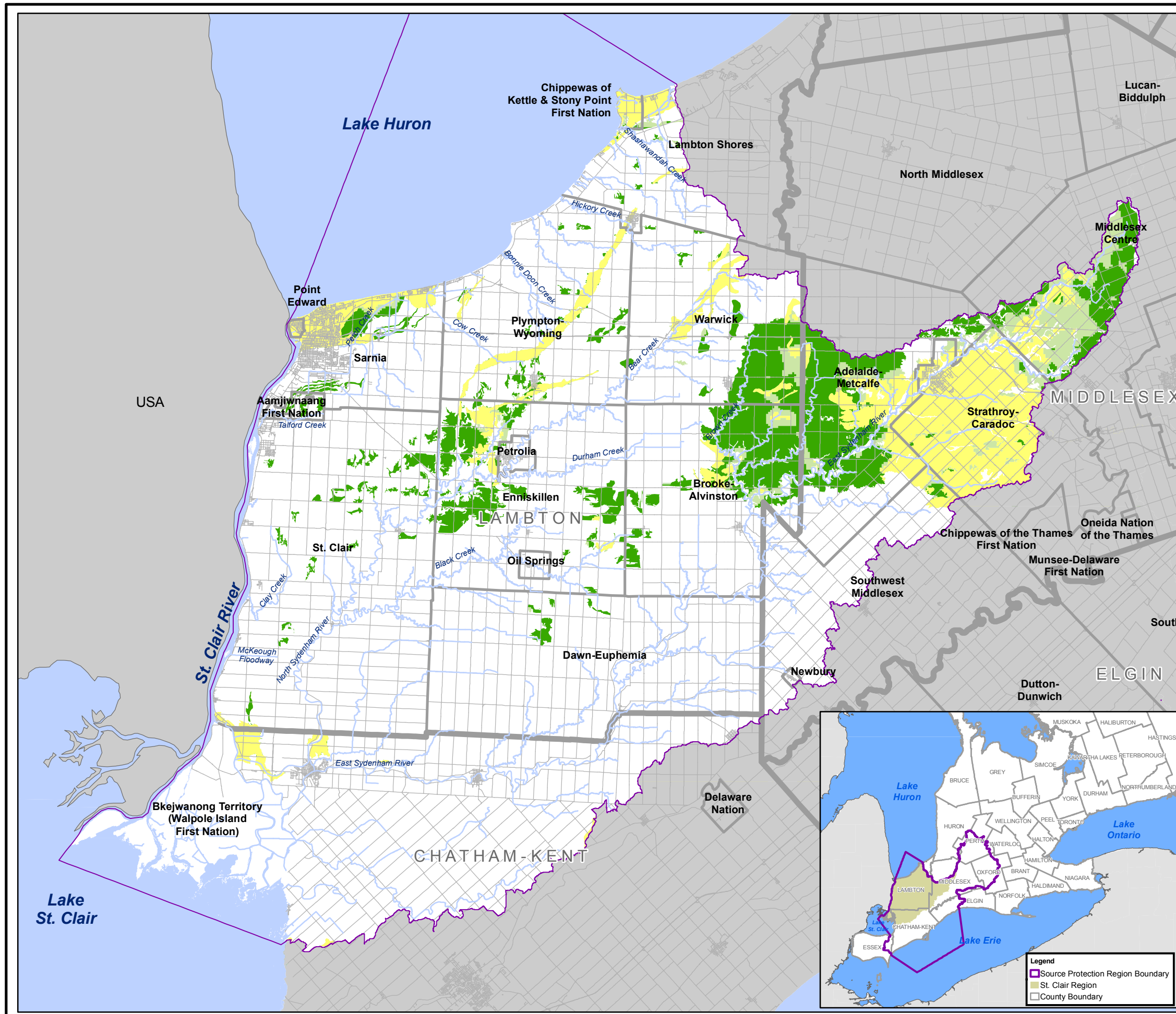
-  St. Clair Region Source Protection Area
-  Municipal Boundaries

Vulnerability Score

-  2
-  4
-  6



0 2.5 5 10 15 20
Kilometres



Map created by SCRCA, May 20, 2011.
 Base mapping produced under license with the Ontario Ministry of Natural Resources. © 2011.
 SGRA Vulnerability: Thames-Sydenham & Region Tier 1 Water Budget, April 2011, and vulnerability assessment completed in Highly Vulnerable Aquifer Identification (Version 2.1, November 2009), UTRCA.



DRINKING WATER SOURCE PROTECTION
ACT FOR CLEAN WATER

Thames-Sydenham & Region

UPPER THAMES RIVER CONSERVATION AUTHORITY

ST. CLAIR CONSERVATION AUTHORITY