

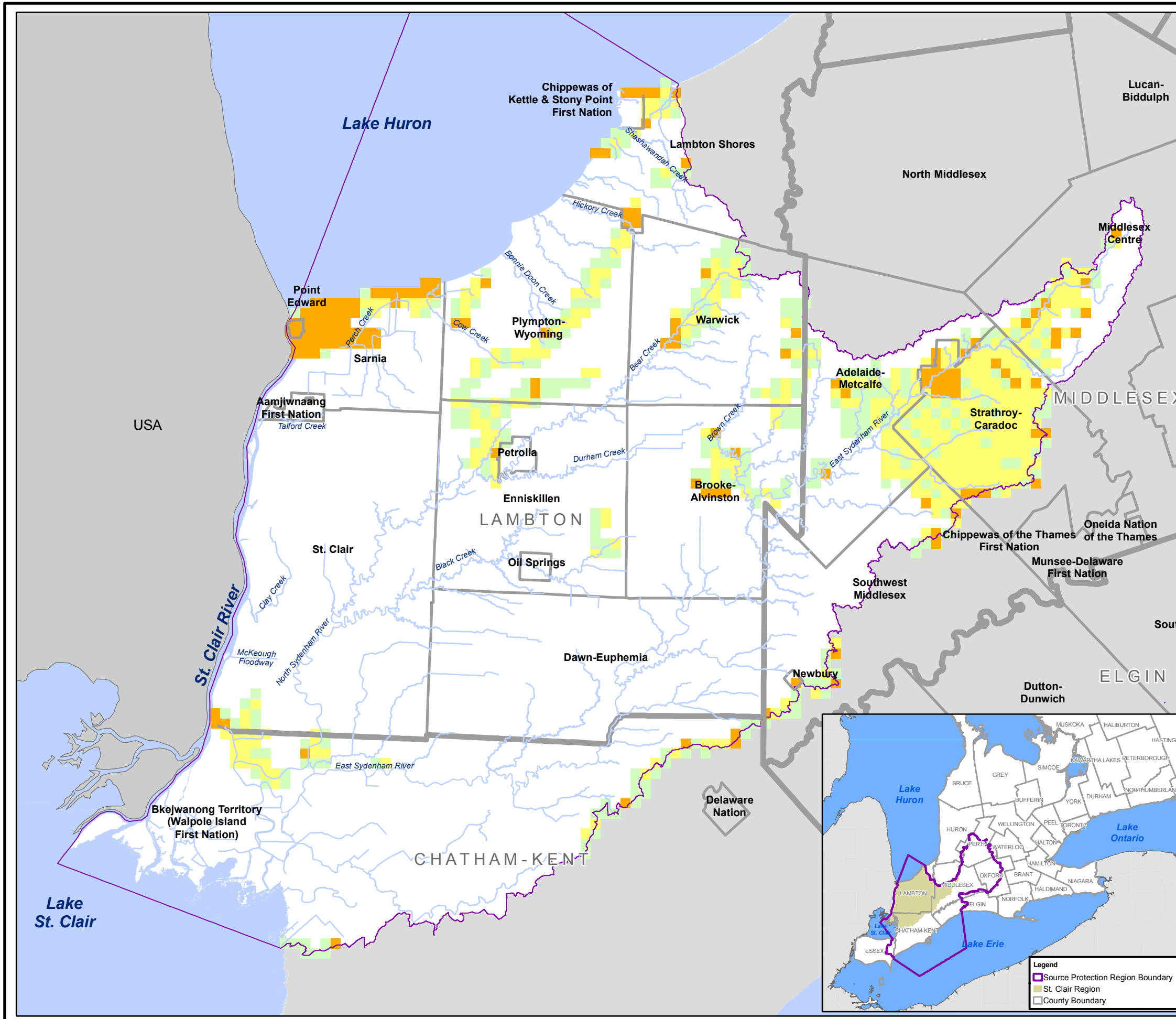
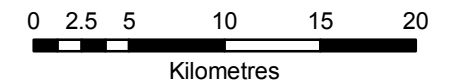
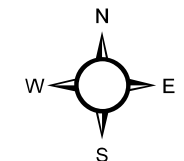
# Map 7-1c Impervious Surface Area within Significant Groundwater Recharge Areas (SGRA)

## St. Clair Region Source Protection Area Assessment Report

### Legend

- Municipal Boundaries
- ▭ St. Clair Region Source Protection Area
- Percent Impervious
  - less than 1.0
  - 1.0 - 7.9
  - 8.0 - 79.9
  - greater than or equal to 80.0

Note: The Percent Impervious is displayed on a 1 km grid, but the calculation only takes into account the vulnerable area within the grid cell.



Map created by SCRCA, May 20, 2011.

Base mapping produced under license with the Ontario Ministry of Natural Resources. © 2011.

Source Protection Area Boundary provided by Ontario Ministry of the Environment, 2006.

Impervious Surface Area, LTVA, 2011.  
Impervious surface area calculated only for those areas where an associated threat can exist.

**DRINKING WATER SOURCE PROTECTION**  
ACT FOR CLEAN WATER

**Thames-Sydenham & Region**

UPPER THAMES RIVER CONSERVATION AUTHORITY