







Map 7-5 Significant Groundwater Recharge Areas (SGRA) and Livestock Density

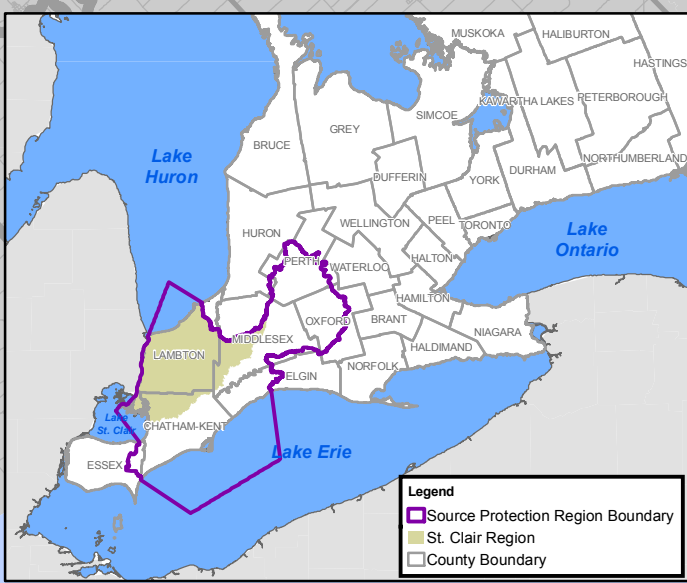
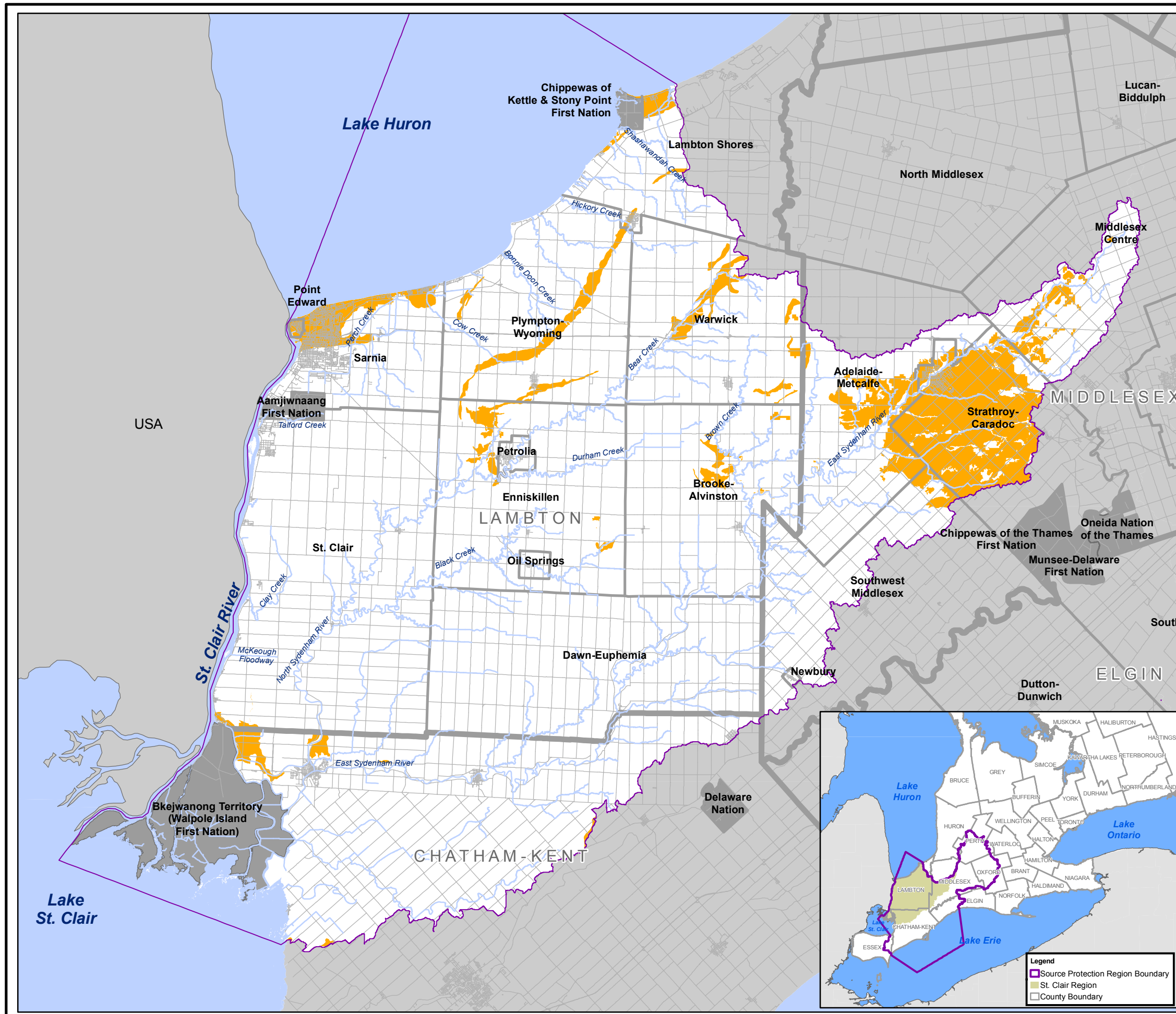
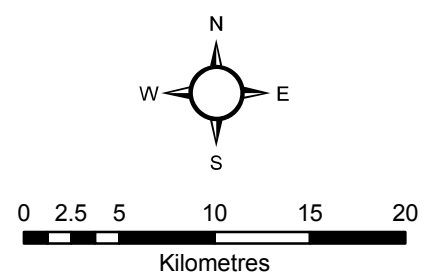
St. Clair Region Source Protection Area Assessment Report

Legend

-  St. Clair Region Source Protection Area
-  Municipal Boundaries
-  First Nation Reserves

**Livestock Density
Nutrient Units / Acre**

-  0 - 0.5
-  0.5 - 1.0
-  > 1.0



Map created by SCRC, April 29, 2011.
 Base mapping produced under license with the Ontario Ministry of Natural Resources. © 2011.
 SGRA;Thames-Sydenham & Region Tier 1 Water Budget, April 2011.
 Livestock Density, LTVCA, 2011.
 Livestock density calculated only for those areas where an associated threat can exist; vulnerability score 6 or greater.
 First Nation reserves were excluded from this calculation.

DRINKING WATER SOURCE PROTECTION
ACT FOR CLEAN WATER

Thames-Sydenham & Region

UPPER THAMES RIVER CONSERVATION AUTHORITY