

Map 1-4 Areas of Settlement

Upper Thames River Source Protection Area Assessment Report

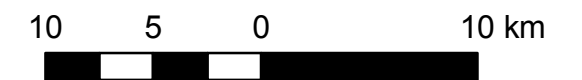
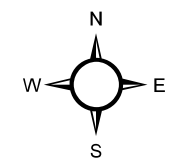
Legend

Designated Areas of Settlement - Estimated Population

- 0-1000
- 1000-5000
- 5000-10000
- 10000-50000
- 50000-400000

Upper Thames River Source Protection Area

Municipal Boundaries

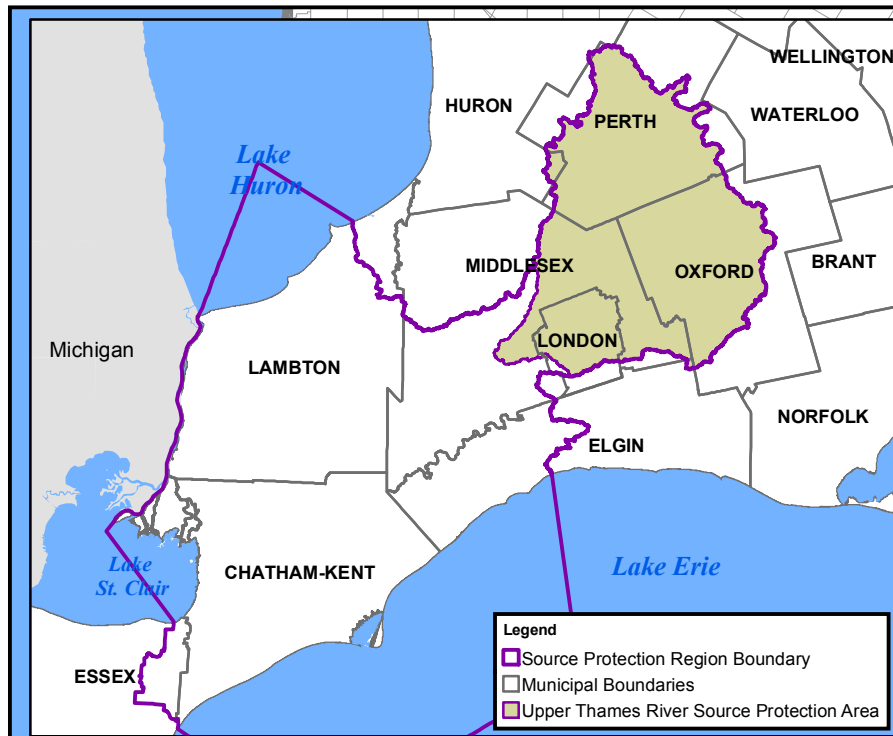
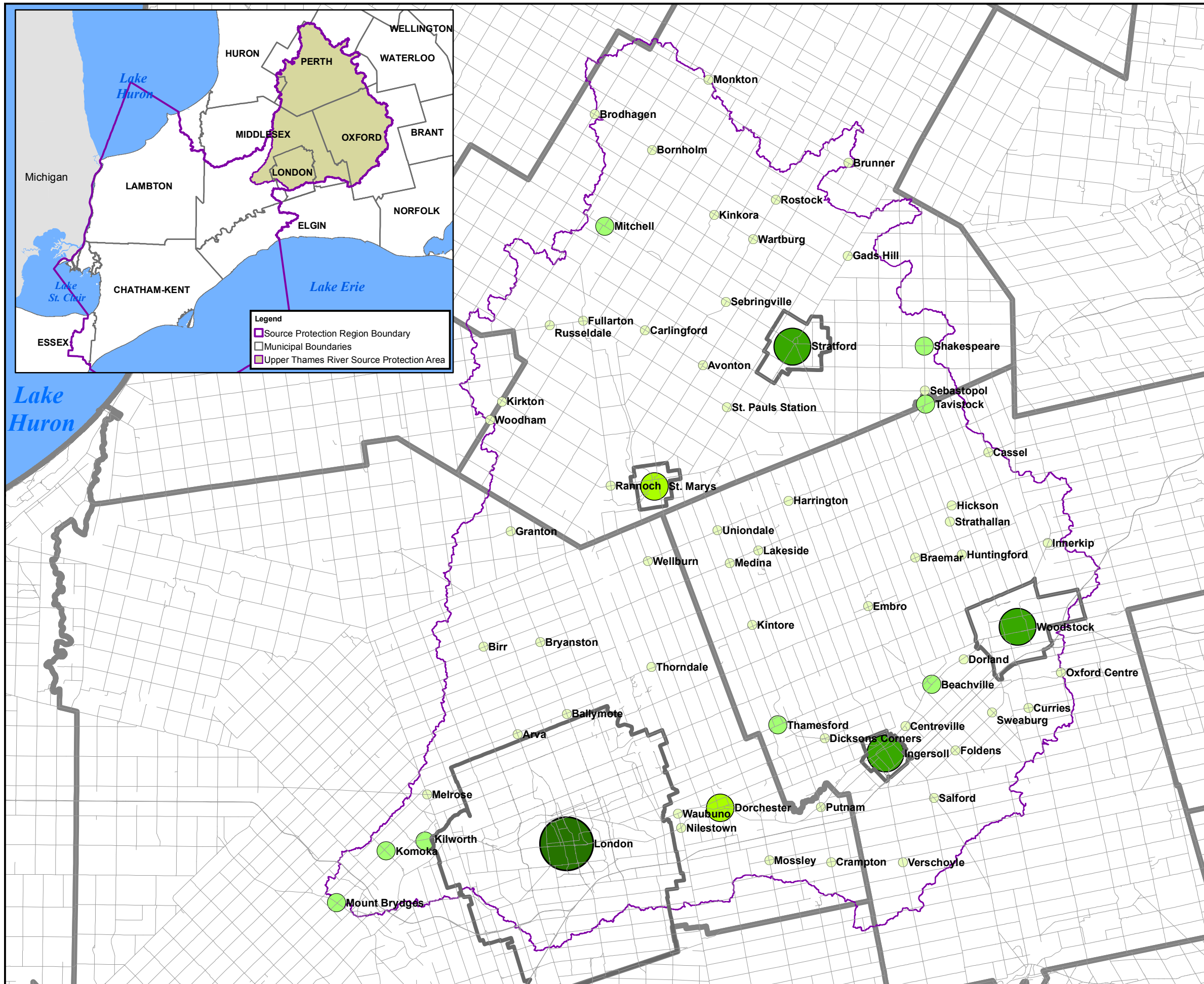


Map Created by UTRCA, August 18, 2010.

Base mapping produced under license with the Ontario Ministry of Natural Resources. © 2010.

Designated Areas of settlement defined by County and/or Local Municipal Official Plans.

Population ranges provided by County and/or Local Municipality, Statistics Canada - Population Census 2001 or 2006, or an estimated population by Thames-Sydenham and Region Source Protection Region.



Legend

- Source Protection Region Boundary
- Municipal Boundaries
- Upper Thames River Source Protection Area