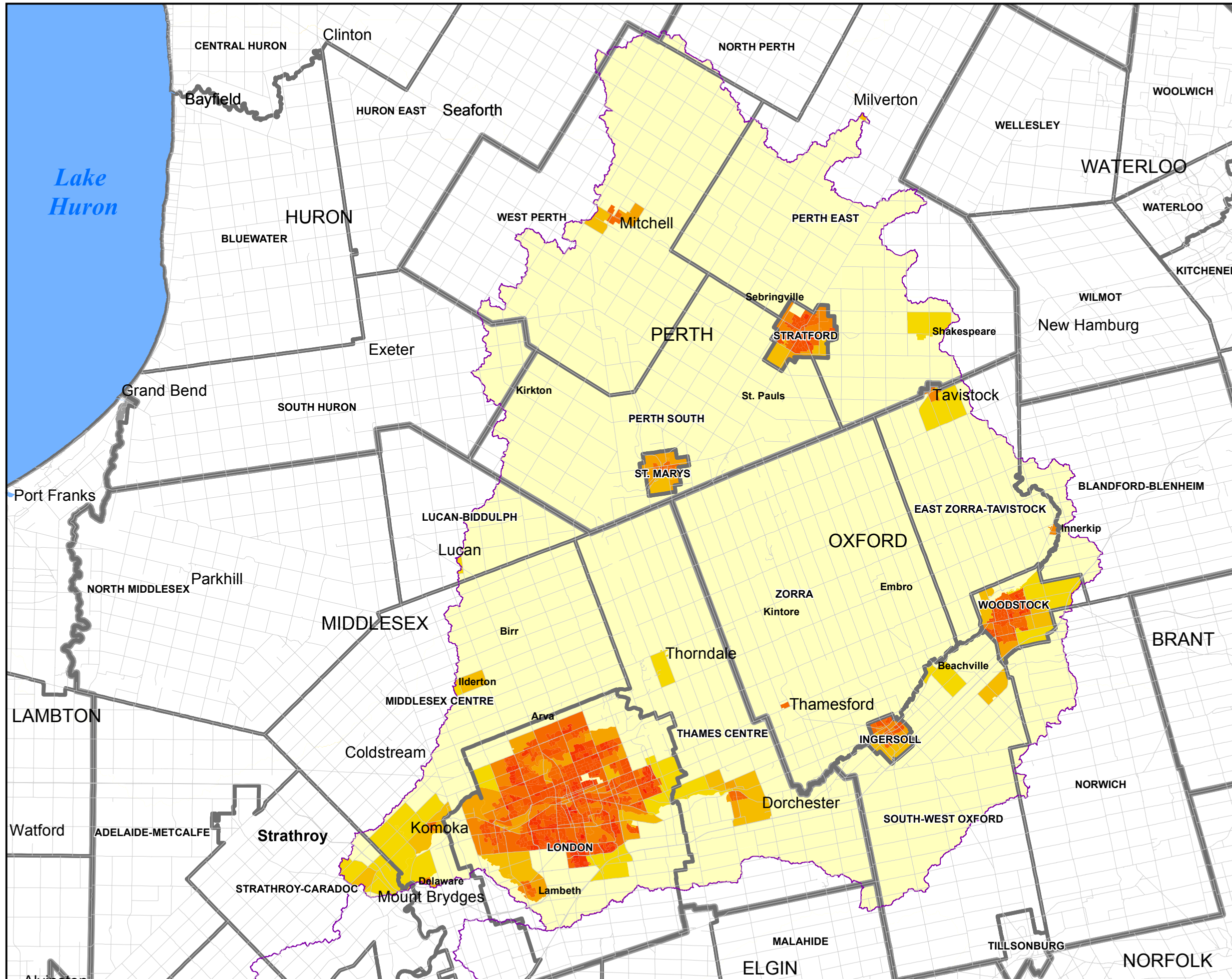


## Map 2-1 Population Density

# Upper Thames River Source Protection Area Assessment Report

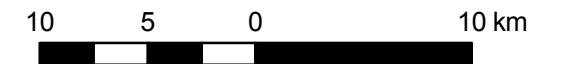
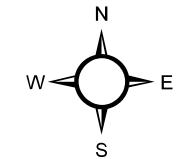


**Legend**

- Source Protection Area Boundary
- Municipal Boundaries
- County Boundaries

**Population (people/km<sup>2</sup>)-C**

0 - 50
51 - 125
126 - 250
251 - 500
501 - 1000
1001 - 2000
2001 - 4000
4001 - 8000
8001 - 16000
16001 - 32000



Map created by UTRCA, August 18, 2010.

Base mapping produced under license with the Ontario Ministry of Natural Resources. © 2010.

Source Protection Area Boundary provided by Ontario Ministry of the Environment, 2006.

Population Density provided by Statistics Canada Population Data, 2006.

Thames-Sydenham  
and Region