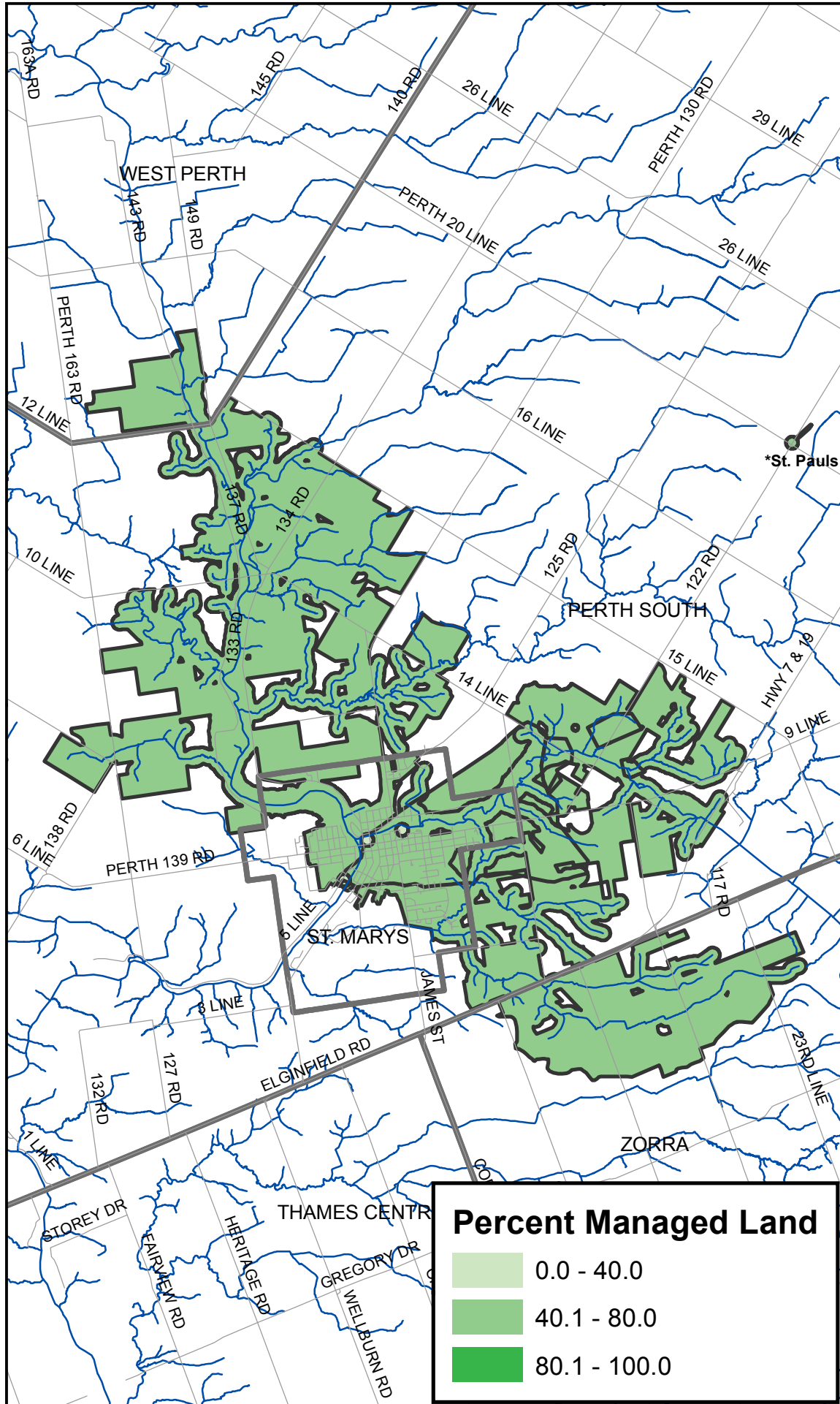
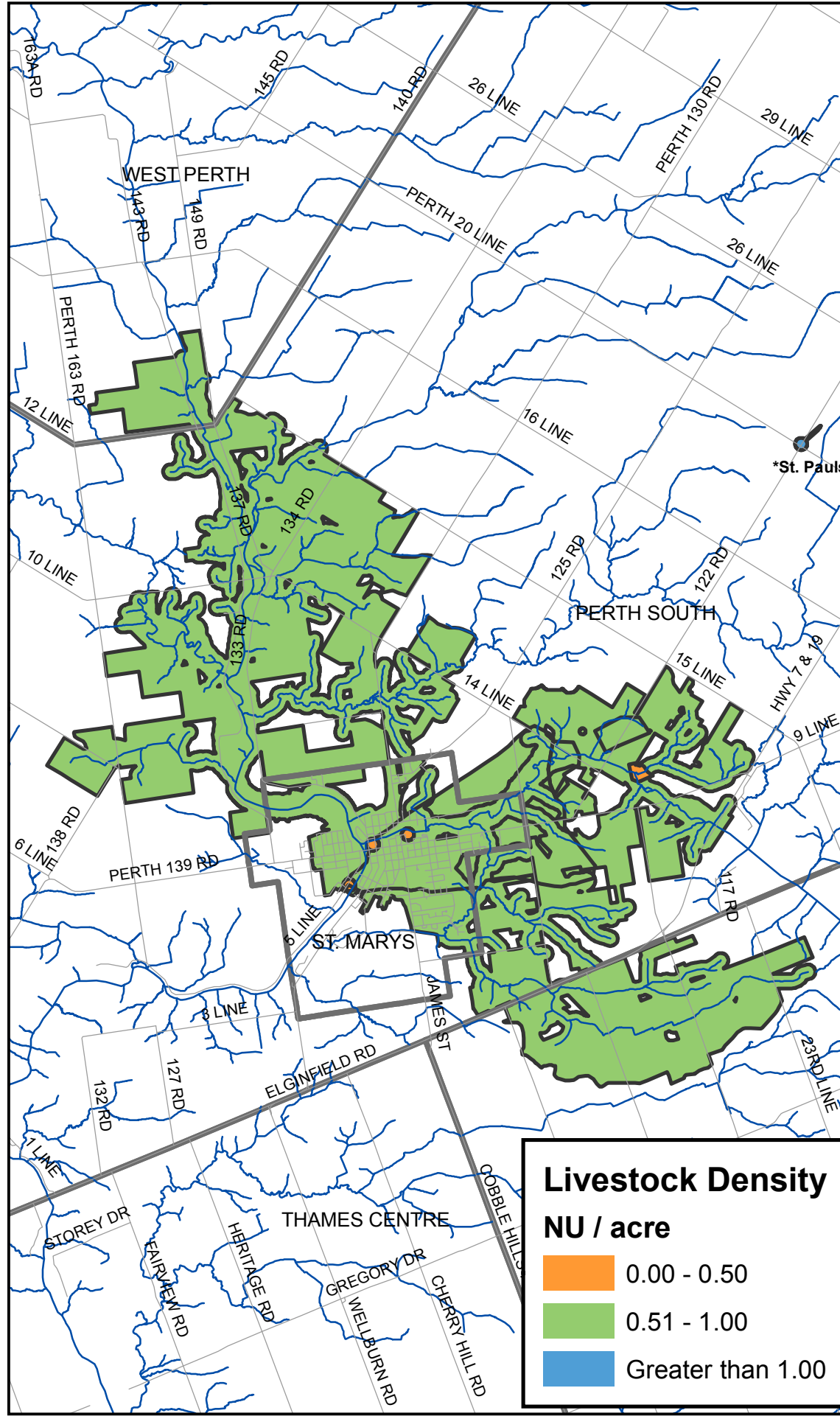


St. Marys Managed Lands

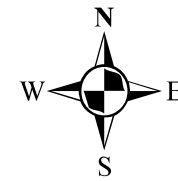


St. Marys Livestock Density



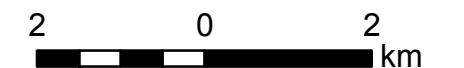
Map 7-2-21 St. Marys Drinking Water Threats Managed Lands and Livestock Density

Upper Thames River Source Protection Area Assessment Report



Legend

- Roads
- Watercourses
- Municipal Boundaries
- WHPA with Vuln Score >= 6



Map created by Thames-Sydenham and Region Source Protection Region (TSR SPR), June 24, 2011.

Base mapping produced under license with the Ontario Ministry of Natural Resources. © 2011.

Source Protection Area Boundary provided by Ontario Ministry of the Environment, 2006.

Percent Managed Land, Livestock Density, TSR SPR, 2011. Percent Managed Land and Livestock Density calculated only for those areas where an associated threat can exist; vulnerability score 6 or greater.

Note: *St. Pauls, see map 7-2-22 for Managed Land and Livestock Density