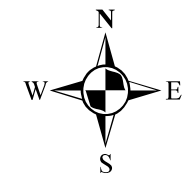


Map 7-3-17a
Woodstock (WHPA-E)
Areas Where Activities
Related to
Pathogens, Chemicals or
Dense Nonaqueous Phase
Liquids (DNAPL) are or
would be Drinking Water Threats

Upper Thames River
Source Protection Area
Assessment Report



1,000 500 0 1,000 m

Legend

- Wells (Groundwater Under Direct Influence)
- Watercourse
- Wellhead Protection Area (Outward Extent WHPA-D)
- Wellhead Protection Area (Vulnerability Score)
- WHPA-E (7.0)

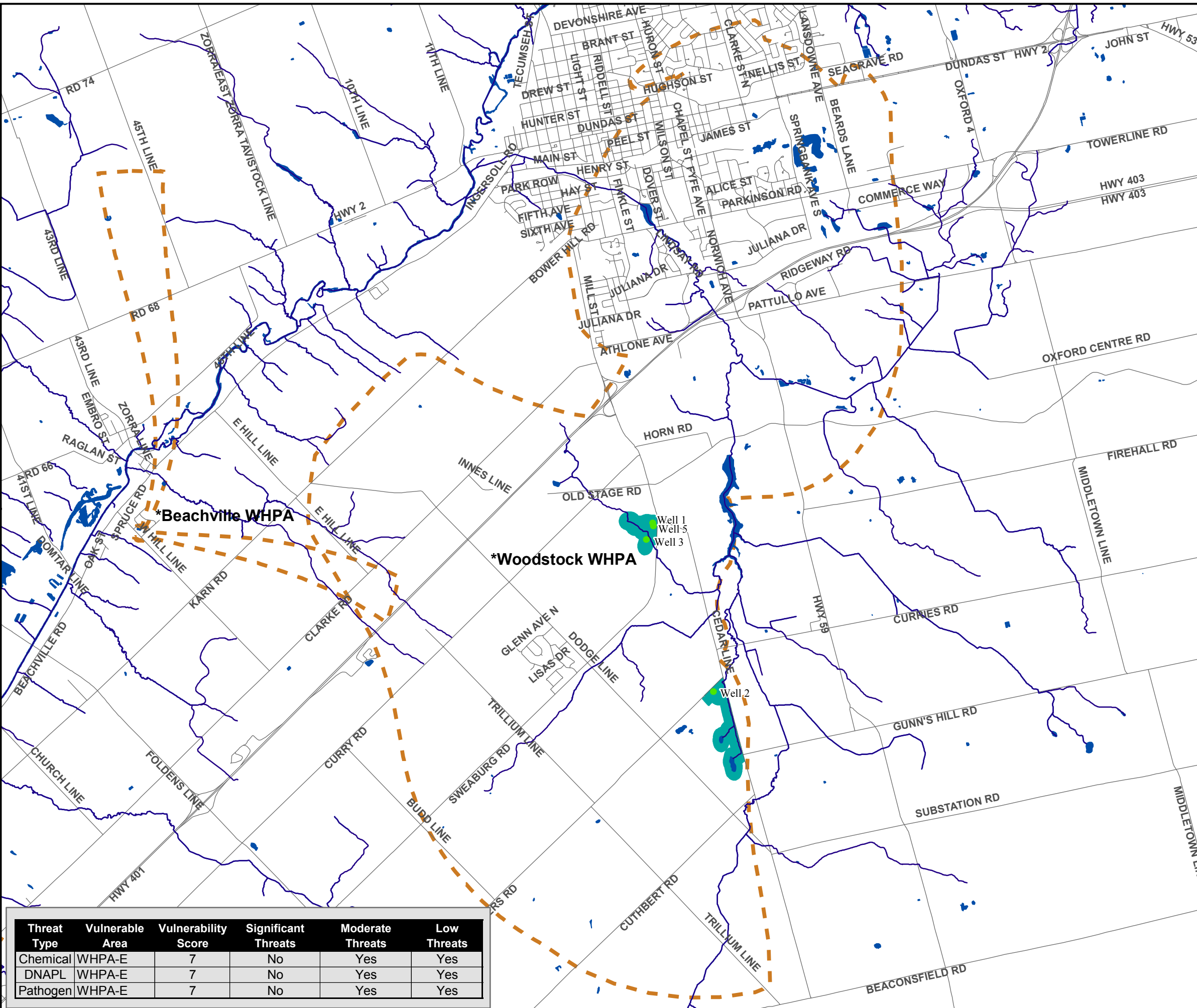
Map created by UTRCA, June 16, 2011.

Base mapping produced under license with the Ontario Ministry of Natural Resources. © 2011.

WHPA-E and F Delineation and Vulnerability Assessment
 Thamesford, Woodstock and Tillsonburg Municipal Water Supplies Phase #1 Report (Draft), March 1, 2011.
 Corporation of Oxford County 11-4459. Dillon Consulting Limited.

Wellhead - Upper Thames River Source Protection Area
 Woodstock - Rural Well Systems Threats Assessment,
 County of Oxford, Prepared by the County of Oxford,
 Community and Strategic Planning Office, June 24, 2010.

Note
 * Woodstock WHPA - see map 7-3-17 for further Wellhead
 Drinking Water Threats Information
 *Beachville WHPA - see map 7-3-8 for further Wellhead Drinking



Threat Type	Vulnerable Area	Vulnerability Score	Significant Threats	Moderate Threats	Low Threats
Chemical	WHPA-E	7	No	Yes	Yes
DNAPL	WHPA-E	7	No	Yes	Yes
Pathogen	WHPA-E	7	No	Yes	Yes

DRINKING WATER SOURCE PROTECTION
 ACT FOR CLEAN WATER

Thames-Sydenham and Region