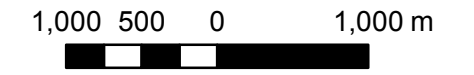


**Map 7-3-17b
Woodstock
Issue Contributing Area (ICA)
Areas Where Activities
Related to
Pathogens, Chemicals or
Dense Nonaqueous Phase
Liquids (DNAPL) are or
would be Drinking Water Threats**

**Upper Thames River
Source Protection Area
Assessment Report**



- Legend**
- Wells (Groundwater Under Direct Influence)
 - Wellhead Protection Area (Outward Extent WHPA-D)
 - Source Protection Area Boundary
 - Grand River Source Protection Area
 - Long Point Region Source Protection Area
 - Significant Threat Area**
 - Issue Contributing Area (ICA)

Map created by UTRCA, December 4, 2014.

Base mapping produced under license with the Ontario Ministry of Natural Resources. © 2011.

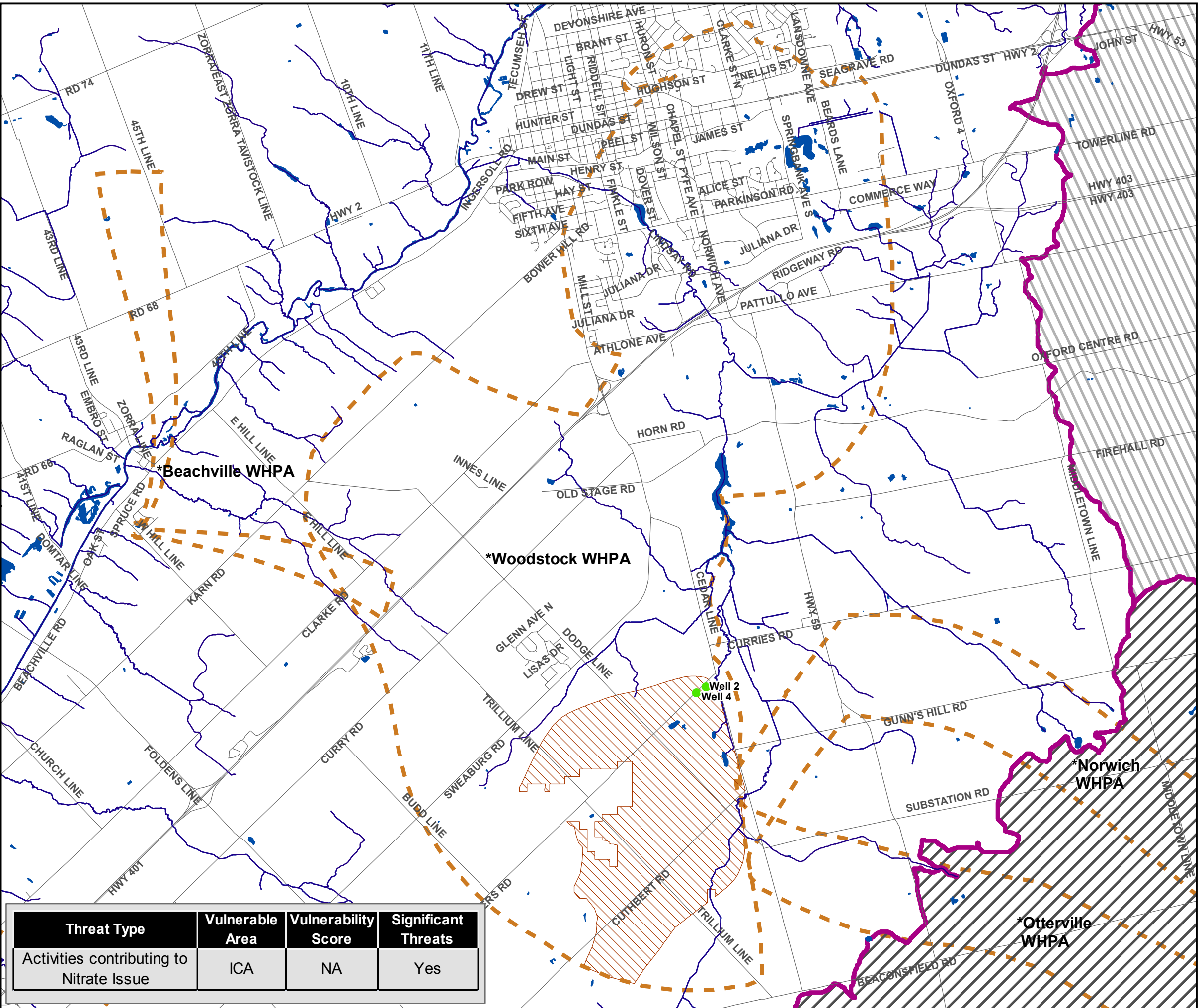
Wellhead - Upper Thames River Source Protection Area Woodstock - Rural Well Systems Threats Assessment, County of Oxford, Prepared by the County of Oxford, Community and Strategic Planning Office, June 24, 2010.

ICA Reference - Final Tabor 2/4 and Tillsonburg 4/5 Municipal Well Nitrate Contributing Areas, Oxford ICA Final, Nov. 21, 2013.

Norwich and Otterville WHPA information- The Updated Assessment Report for the Long Point Region Source Protection Area as approved Feb. 23, 2012.

Note

- * Woodstock WHPA - see map 7-3-17 and 7-3-17a for further Wellhead Drinking Water Threats Information
- * Beachville WHPA - see map 7-3-8 for further Wellhead Drinking Water Threats Information
- * Norwich and Otterville WHPA information- see The Updated Assessment Report for the Long Point Region Source Protection Area as approved Feb. 23, 2012.



Threat Type	Vulnerable Area	Vulnerability Score	Significant Threats
Activities contributing to Nitrate Issue	ICA	NA	Yes

DRINKING WATER SOURCE PROTECTION
ACT FOR CLEAN WATER

Thames-Sydenham and Region