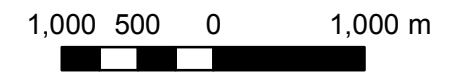
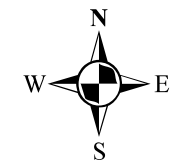


Map 7-3-21a
St. Marys (WHPA-E)
Areas Where Activities
Related to
Pathogens, Chemicals or
Dense Nonaqueous Phase
Liquids (DNAPL) are or
would be Drinking Water Threats

Upper Thames River
Source Protection Area
Assessment Report



Legend

- Wells (Groundwater Under Direct Influence)
- Watercourse
- Wellhead Protection Area (Outward Extent WHPA-D)
- Wellhead Protection Area (Vulnerability Score)
- WHPA-E (7.2)

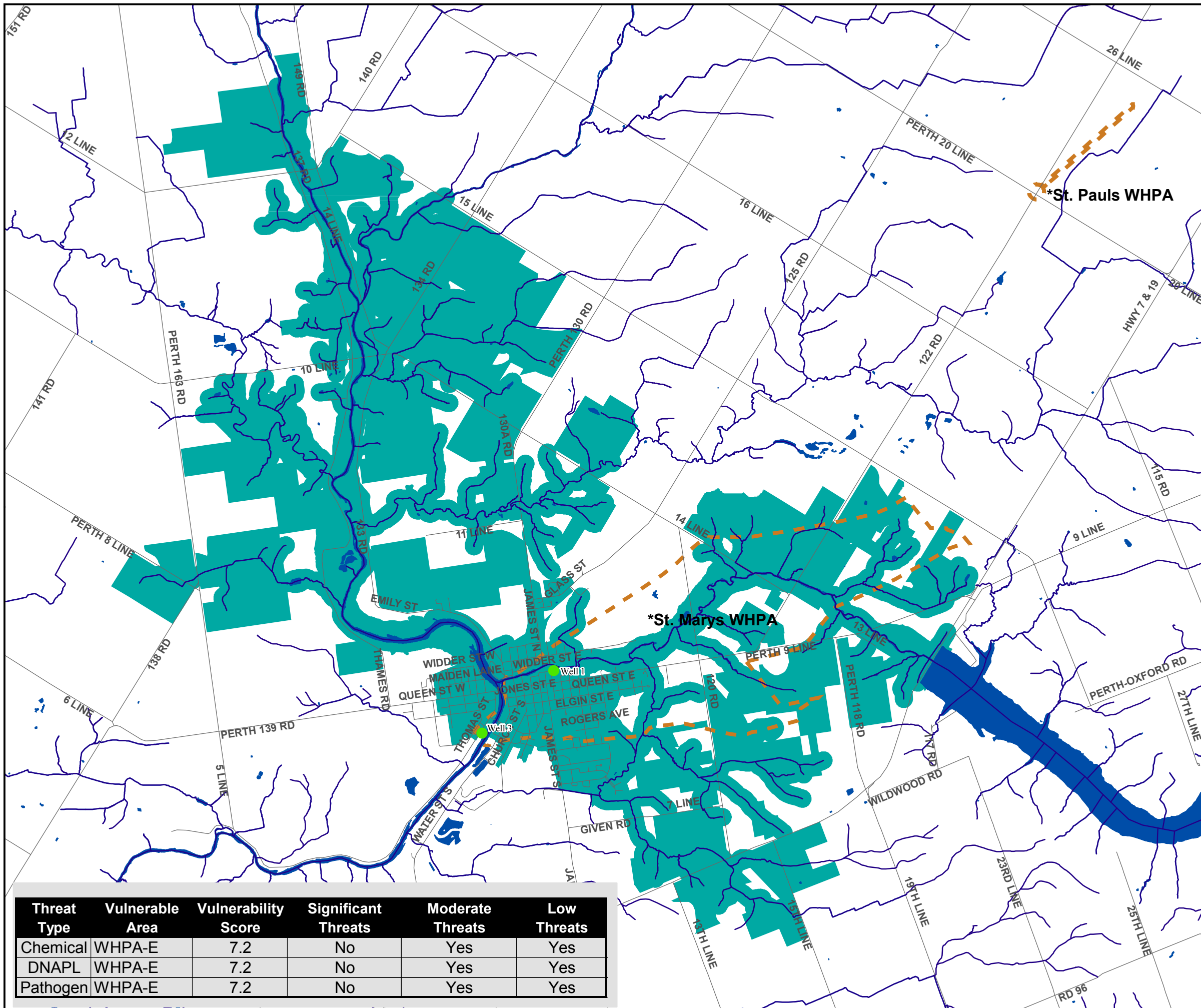
Map created by UTRCA, June 2, 2011.

Base mapping produced under license with the Ontario Ministry of Natural Resources. © 2011.

WHPA-E: WHPA-E and F Delineation and Vulnerability Assessment Dorchester, Fanshawe & St. Marys Municipal Water Supplies Phase 2 Draft Report, April 18, 2011.
 Thames-Sydenham Region Source Protection Region 10-4229. Dillon Consulting Limited,
 and
 St Marys Well 1 WHPA-E Delineation Draft, Upper Thames River Conservation Authority, April 2011,

Wellhead - Draft St. Marys Wellhead Protection Area Modelling, Schlumberger Water Service (Canada) Inc. July 2010.

Note
 * St.Marys WHPA - see map 7-3-21 for further Wellhead Drinking Water Threats information.
 * St.Pauls WHPA - see map 7-3-22 for further Wellhead Drinking Water Threats information.



Threat Type	Vulnerable Area	Vulnerability Score	Significant Threats	Moderate Threats	Low Threats
Chemical	WHPA-E	7.2	No	Yes	Yes
DNAPL	WHPA-E	7.2	No	Yes	Yes
Pathogen	WHPA-E	7.2	No	Yes	Yes