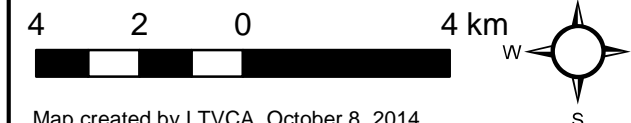


Map 4-3b Wheatley IPZ-3 and Fuel Event Based Areas

Lower Thames Valley Source Protection Area Assessment Report

Legend

- Municipal Surface Water Intake
- Source Protection Region Boundary
- Shoreline
- IPZ-1 (Primary and Emergency)
- IPZ-2 (Primary and Emergency)
- Essex Region SPA*
- IPZ-3
- Municipal Boundaries
- County Boundaries
- EBA - Fuel 15 (m3 or 15,000 L)



Map created by LTVCA, October 8, 2014.

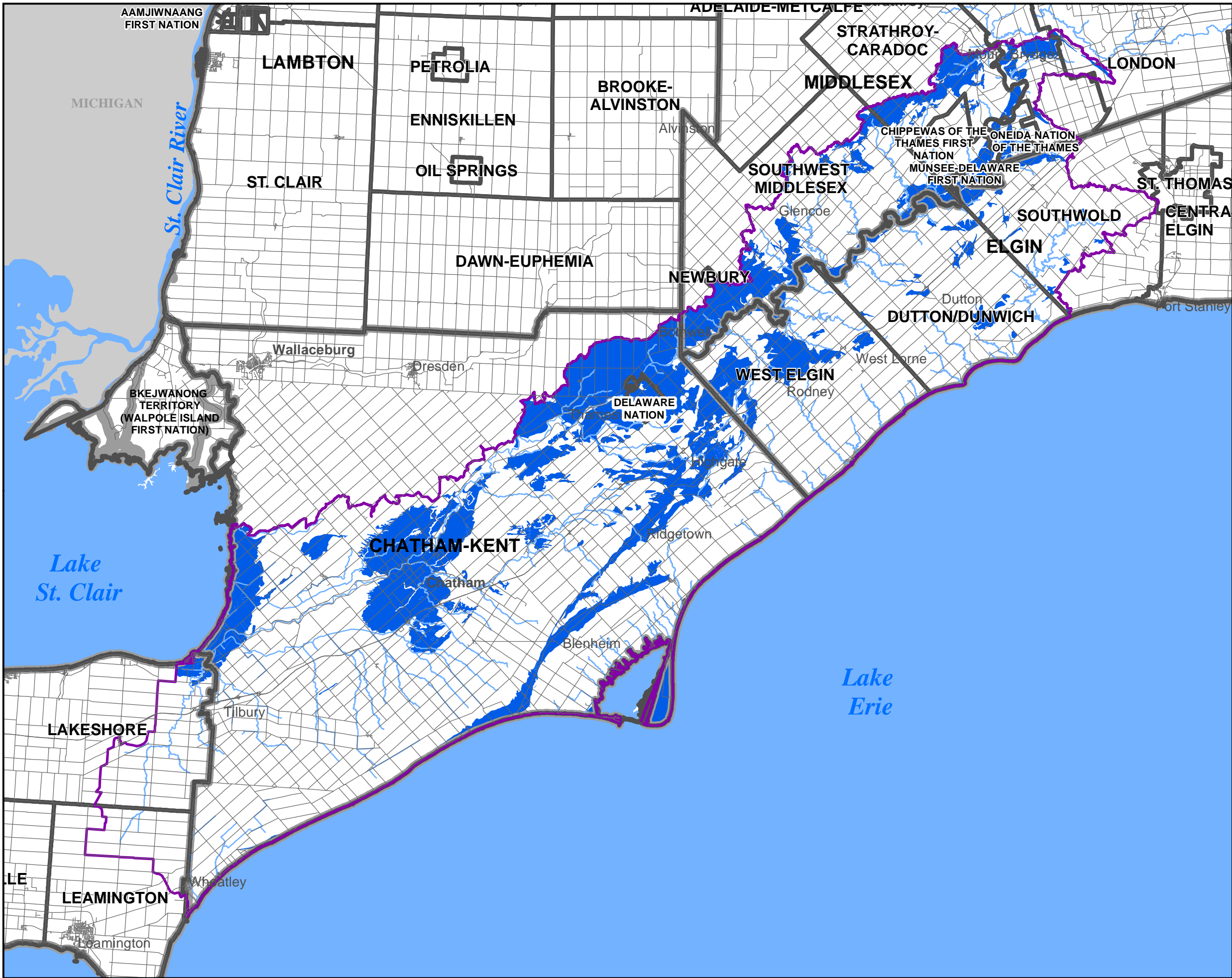
Base mapping produced under license with the Ontario Ministry of Natural Resources. © 2011.

Source Protection Area Boundary provided by Ontario Ministry of the Environment, 2006.

Intake Protection Zones 1 & 2 - Thames-Sydenham and Region Source Protection Region, Sept. 2009 and Essex Chatham-Kent Source Protection Planning Technical Study, Technical Memorandum: Delineation, Vulnerability and Uncertainty Level Analyses for the Thames, Sydenham & Region Water Treatment Plants, Stantec Consulting Ltd. 2009.

Event Based Area (IPZ-3) - Thames-Sydenham and Region Source Protection Region, 2014 .

*Note: Area is within Essex Region Source Protection Area (ERSPA). Refer to ERSOA Assessment Report for delineation and detailed information related to the part of the IPZ in the ERSOA.



Map 4-8 Significant Groundwater Recharge Areas (SGRA)

Lower Thames Valley Source Protection Area Assessment Report

Legend

- Source Protection Area Boundary
- Municipal Boundaries
- County Boundaries
- Significant Groundwater Recharge Area

Map created by UTRCA, October 2, 2014.

Base mapping produced under license with the Ontario Ministry of Natural Resources. © 2011.

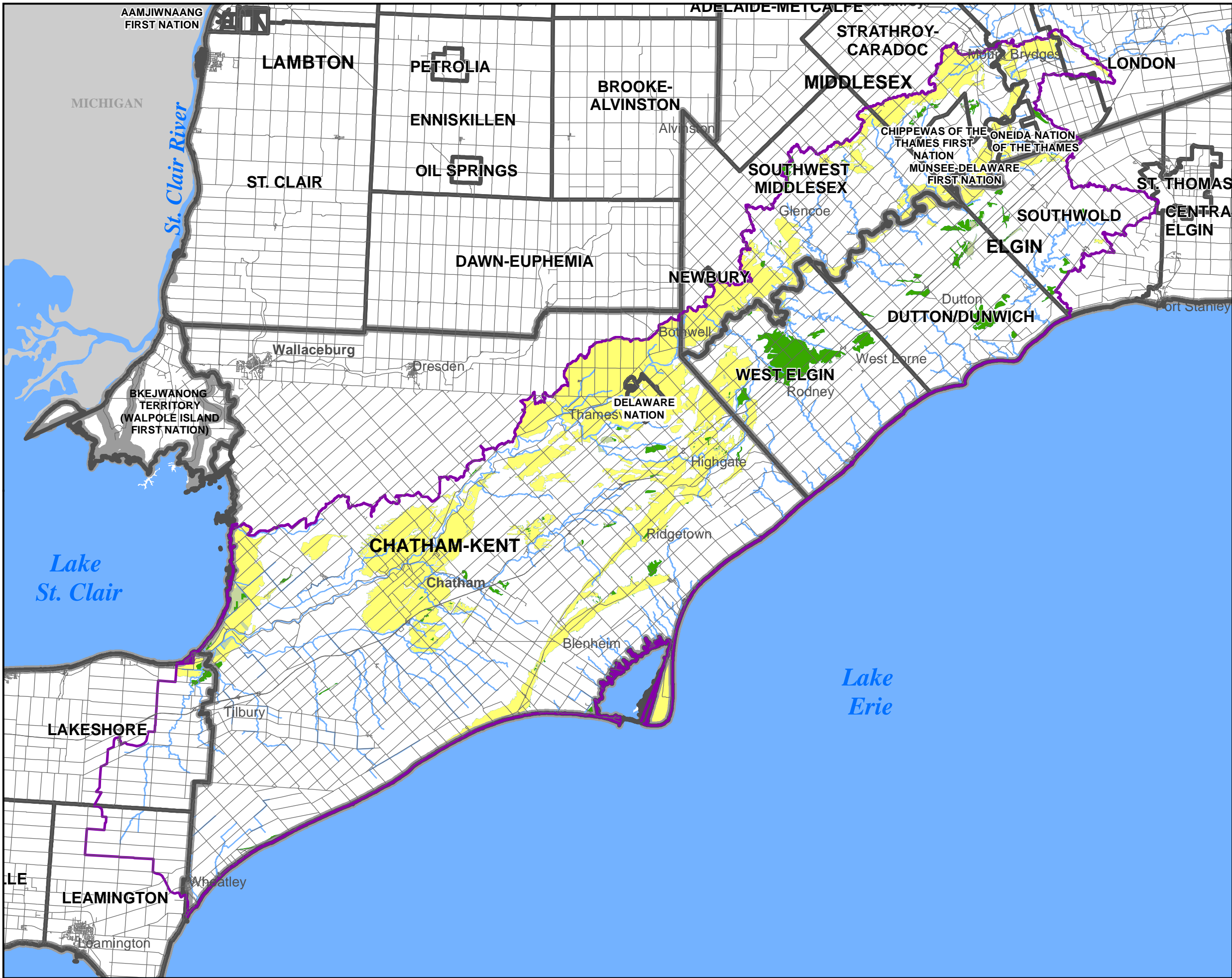
Source Protection Area Boundary provided by Ontario Ministry of the Environment, 2006.

SGRA;Thames-Sydenham & Region Tier 1 Water Budget, April 2011.

DRINKING WATER
SOURCE PROTECTION
ACT FOR CLEAN WATER

Thames-Sydenham
and Region

UPPER THAMES RIVER
CONSERVATION AUTHORITY



Map 4-9
Significant Groundwater
Recharge Areas (SGRA)
Vulnerability

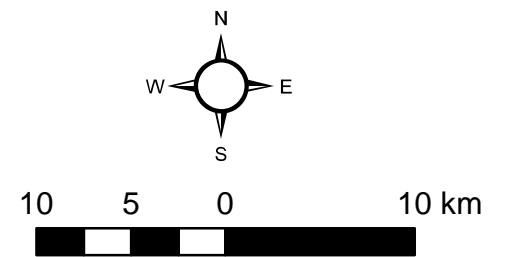
Lower Thames Valley Source Protection Area Assessment Report

Legend

- Source Protection Area Boundary
- Municipal Boundaries
- County Boundaries

Vulnerability Score

- 2
- 4
- 6

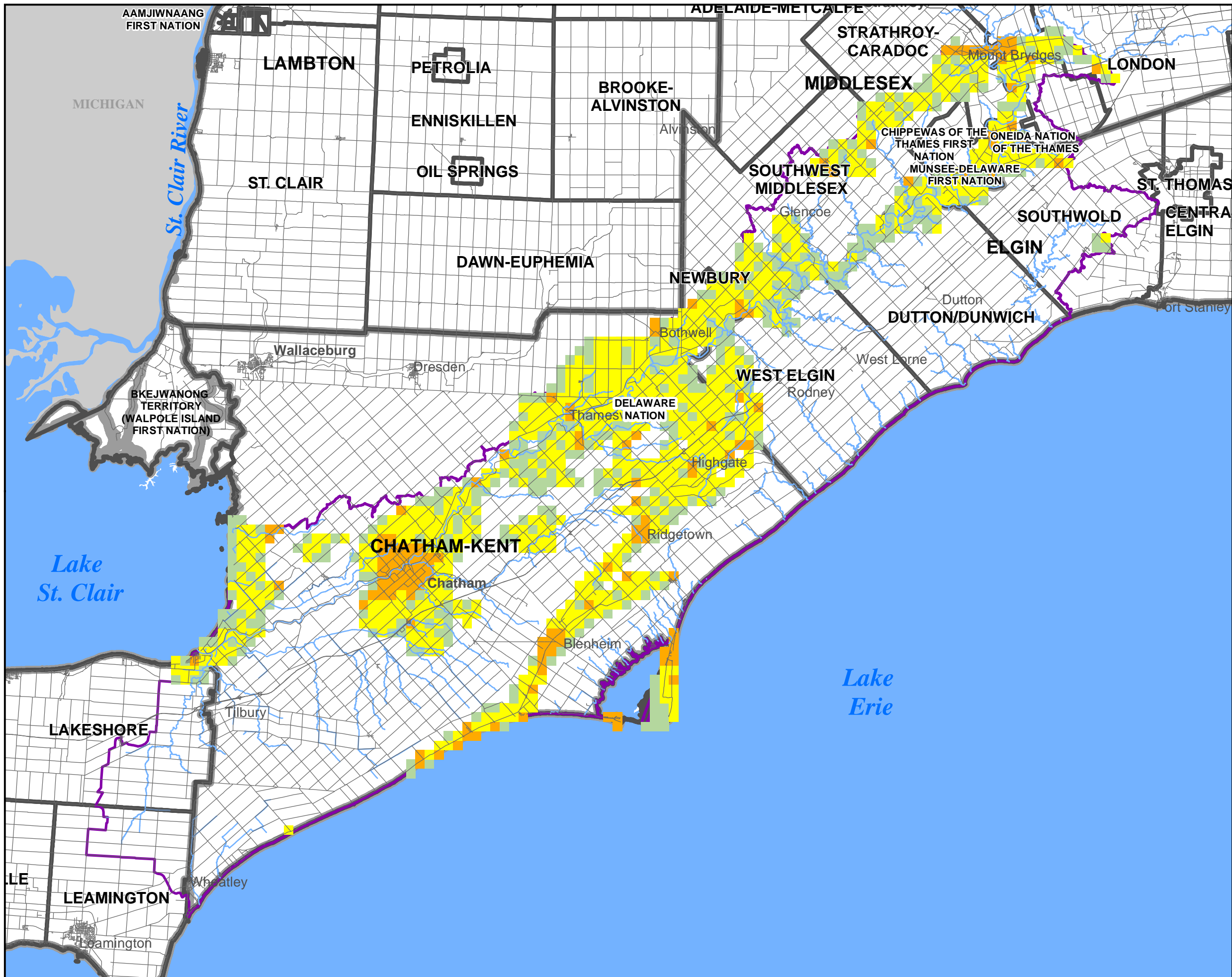


Map created by UTRCA, October 2, 2014.

Base mapping produced under license with the Ontario Ministry of Natural Resources. © 2011.

Source Protection Area Boundary provided by Ontario Ministry of the Environment, 2006.

SGRA;Thames-Sydenham & Region Tier 1 Water Budget, April 2011.



Map 7-1c
Impervious Surface Area within
Significant Groundwater
Recharge Areas (SGRA)

Lower Thames Valley Source Protection Area Assessment Report

Legend

Source Protection Area Boundary

Municipal Boundaries

County Boundaries

Percent Impervious

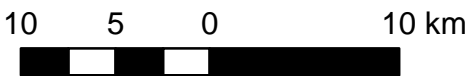
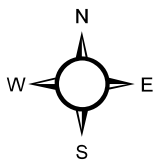
0.0 - 1.0

1.1 - 8.0

8.1 - 80.0

80.1 - 100

Note: The Percent Impervious is displayed on a 1 km grid, but the calculation only takes into account the vulnerable area within the grid cell.



Map created by UTRCA, October 2, 2014.

Base mapping produced under license with the Ontario Ministry of Natural Resources. © 2011.

Source Protection Area Boundary provided by Ontario Ministry of the Environment, 2006.

Impervious Surface Area, LTVCA, 2014.
Impervious surface area calculated only for those areas where an associated threat can exist; for SGRA's vulnerability scores 6 or greater.

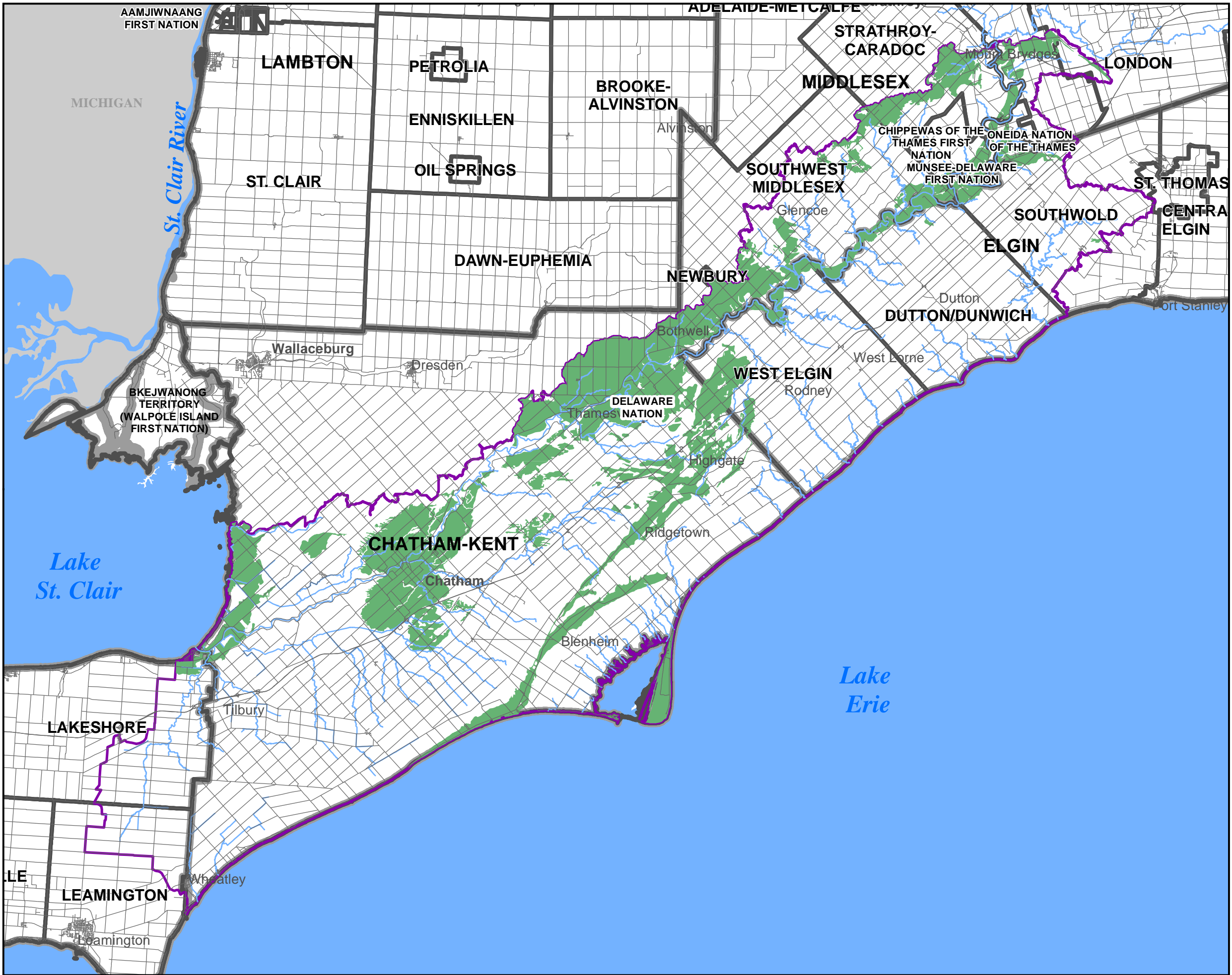
DRINKING WATER
SOURCE PROTECTION
ACT FOR CLEAN WATER

Thames-Sydenham
and Region



UPPER THAMES RIVER
CONSERVATION AUTHORITY





Map 7-2d
Percent Managed Lands
within Significant Groundwater
Recharge Areas (SGRA)

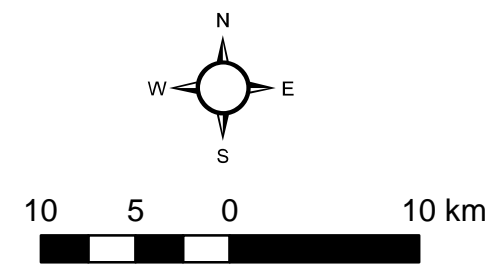
Lower Thames Valley Source Protection Area Assessment Report

Legend

- Municipal Boundaries
- County Boundaries
- Source Protection Area Boundary

Percent Managed Land

- 0.0 - 40.0
- 40.1 - 80.0
- 80.1 - 100.0

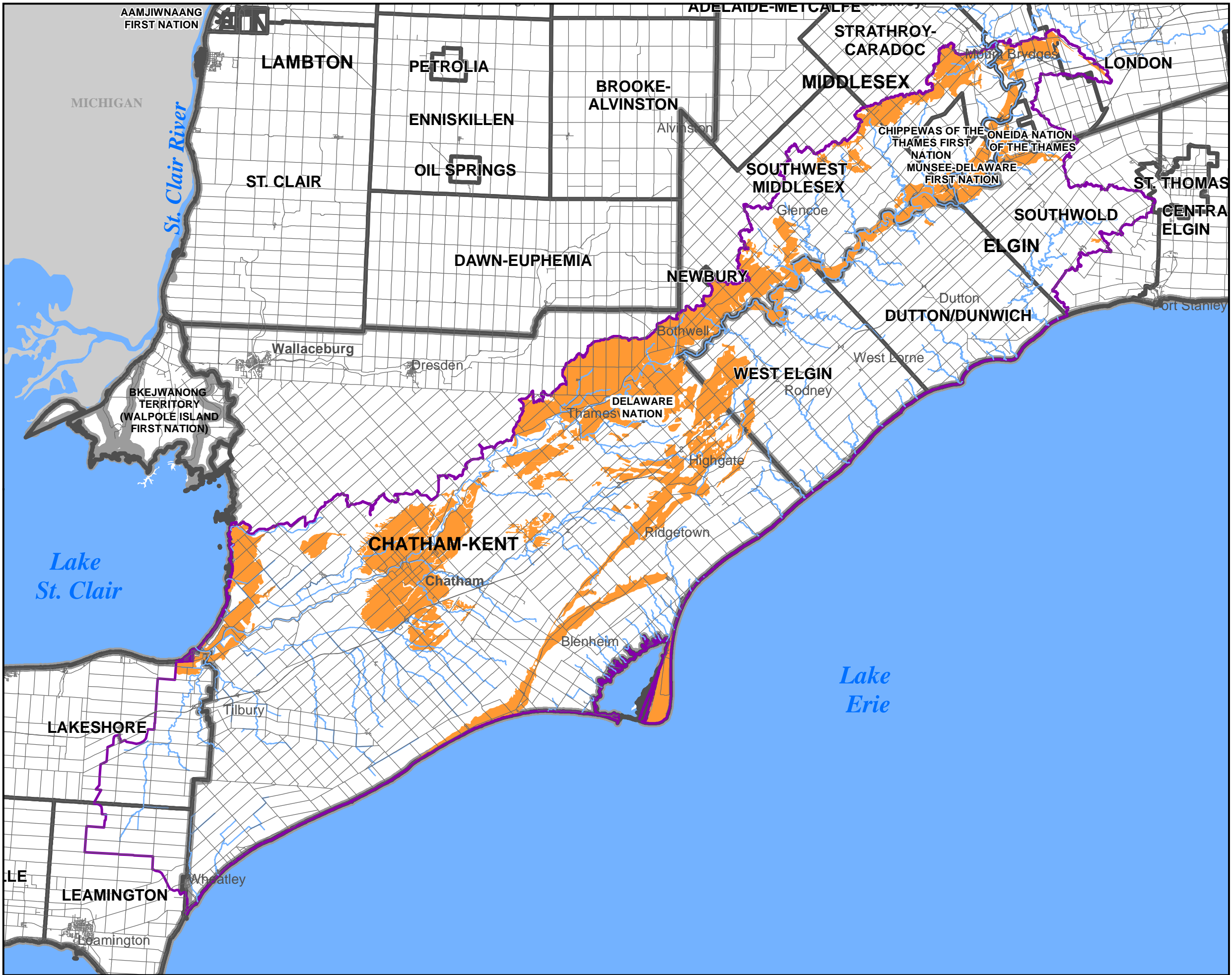


Map created by LTVCA, October 7, 2014.

Base mapping produced under license with the Ontario Ministry of Natural Resources. © 2011.

Source Protection Area Boundary provided by Ontario Ministry of the Environment, 2006.

Percent Managed Lands, LTVCA, 2014.
Percent Managed Lands area calculated only for those areas where an associated threat can exist; for SGRAs vulnerability scores 6 or greater.



Map 7-3d
Livestock Density within
Significant Groundwater
Recharge Areas (SGRA)

Lower Thames Valley Source Protection Area Assessment Report

Legend

- Municipal Boundaries
- County Boundaries
- Source Protection Area Boundary

Livestock Density
NU/Acre

- 0.00 - 0.50
- 0.51 - 1.00
- Greater than 1.00

Map created by UTRCA, October 2, 2014.

Base mapping produced under license with the Ontario Ministry of Natural Resources. © 2011.

Source Protection Area Boundary provided by Ontario Ministry of the Environment, 2006.

Livestock Density, LTVCA, 2014.
Livestock Density calculated only for those areas where an associated threat can exist; for SGRAs vulnerability scores 6 or greater.

DRINKING WATER
SOURCE PROTECTION
ACT FOR CLEAN WATER

Thames-Sydenham
and Region