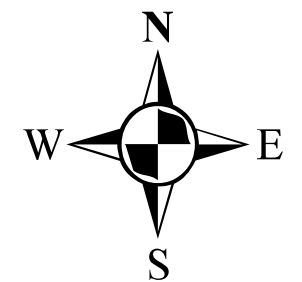


# Map 4-1-17 Woodstock Wellhead Protection Area (WHPA)

## Upper Thames River Source Protection Area Assessment Report



Map created by UTRCA, October 2, 2014

Base mapping produced under license with the Ontario Ministry of Natural Resources. © 2014.

Vulnerable Areas and Wellhead Protection Areas - Thames-Sydenham and Region Source Protection Region, Sept. 2009 and as per Part V and VII of the Technical Rules: Assessment Report (MOE, proposed amendments August 2009).

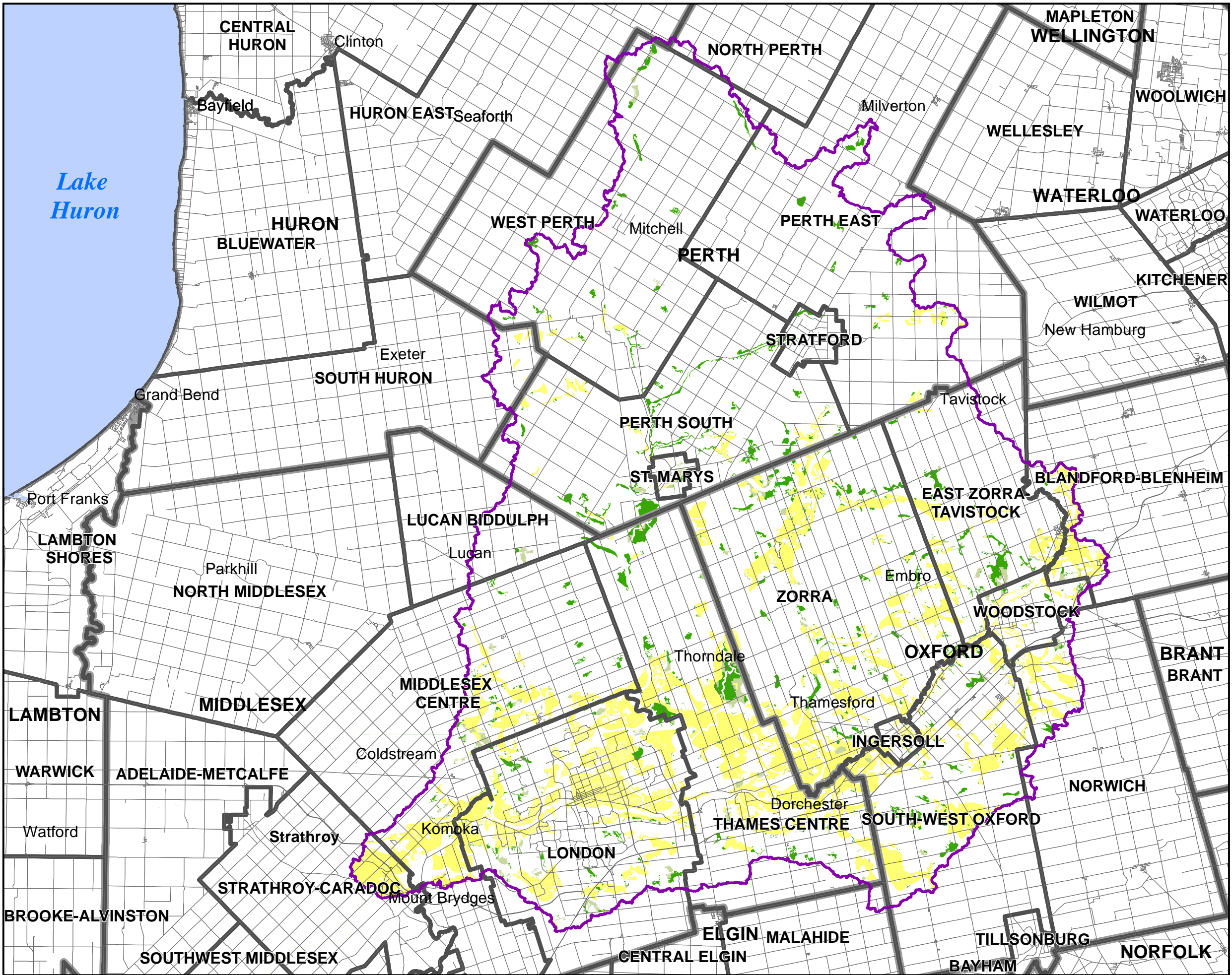
Ground Water Vulnerability, Wellhead Protection Areas and Vulnerability Assessment - as contained in the approved Upper Thames River Source Protection Area - Amended Proposed Assessment Report Revised - August 12, 2011, including Sweaburg Area Groundwater Vulnerability Amendment, Technical Memorandum, ARL Groundwater Resources, Ltd, March24, 2014

Note: \*Beachville see map 4-1-8 for complete coverage of WHPA.









Map 4-2-2  
Significant Groundwater  
Recharge Areas (SGRA)  
Vulnerability

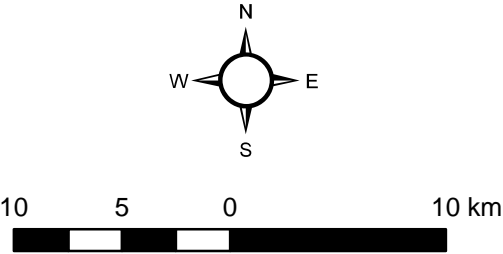
## Upper Thames River Source Protection Area Assessment Report

**Legend**

- Source Protection Area Boundary
- Municipal Boundaries
- County Boundaries

**Vulnerability Score**

- 2
- 4
- 6



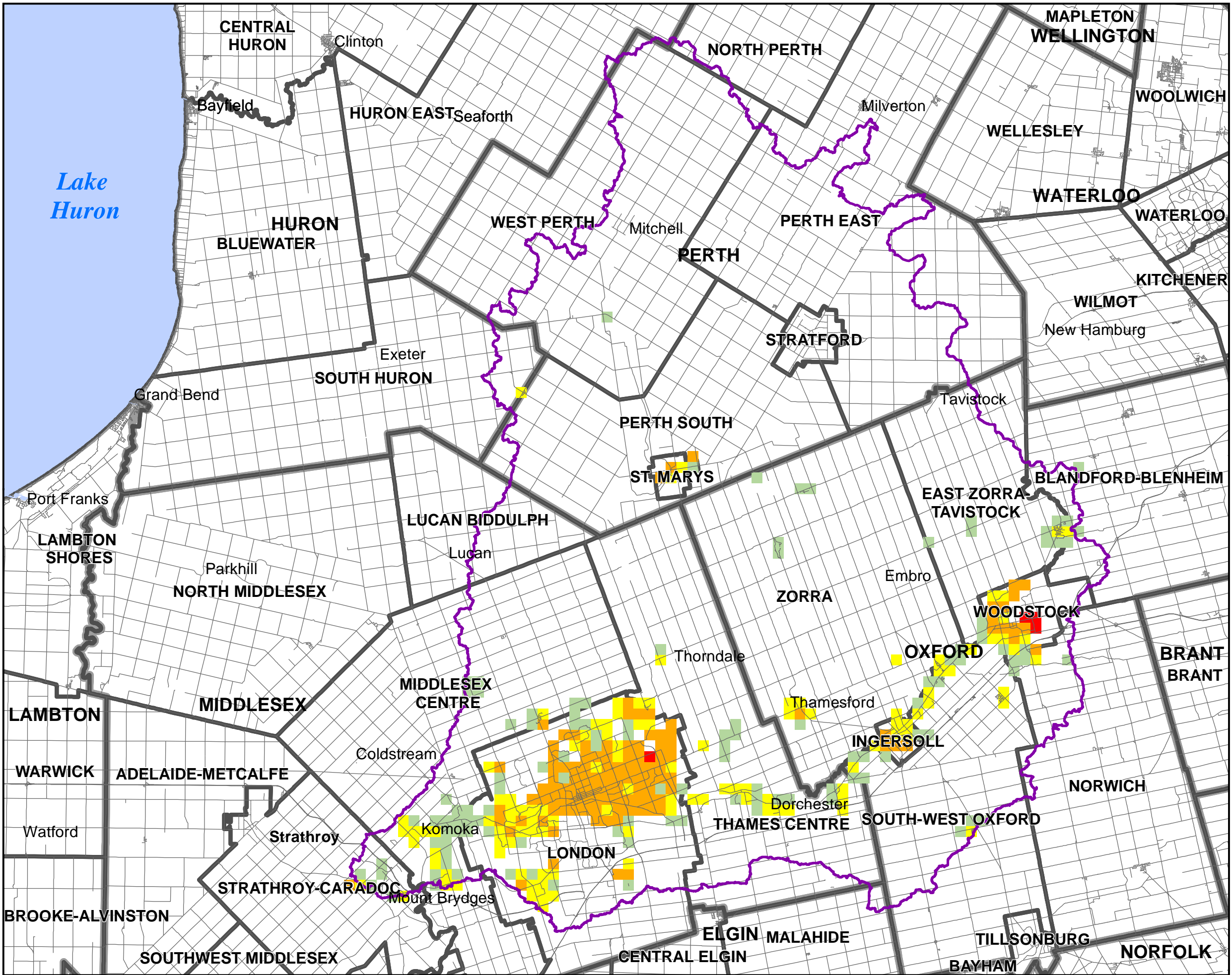
Map created by UTRCA, October 1, 2014.

Base mapping produced under license with the Ontario Ministry of Natural Resources. © 2014.

Source Protection Area Boundary provided by Ontario Ministry of the Environment, 2006.

SGRA: Tier Three Water Budget and Local Area Risk Assessment, Thames Sydenham and Region Source Protection Region, Oxford County, St Marys, Stratford and St. Pauls, Matrix Solutions Inc. March 2014 and Highly Vulnerable Aquifer





**Map 7-1-25**  
**Impervious Surface Area**  
**in Significant Groundwater**  
**Recharge Areas (SGRA)**

**Upper Thames River**  
**Source Protection Area**  
**Assessment Report**

**Legend**

- Source Protection Area Boundary
- County Boundaries
- Municipal Boundaries

**Percent Impervious**

- 0.0 - 1.0
- 1.1 - 8.0
- 8.1 - 80.0
- 80.1 - 100.0

N  
W E  
S

10 5 0 10 km

Map created by UTRCA, October 1, 2014.

Base mapping produced under license with the Ontario Ministry of Natural Resources. © 2010.

Source Protection Area Boundary provided by Ontario Ministry of the Environment, 2006.

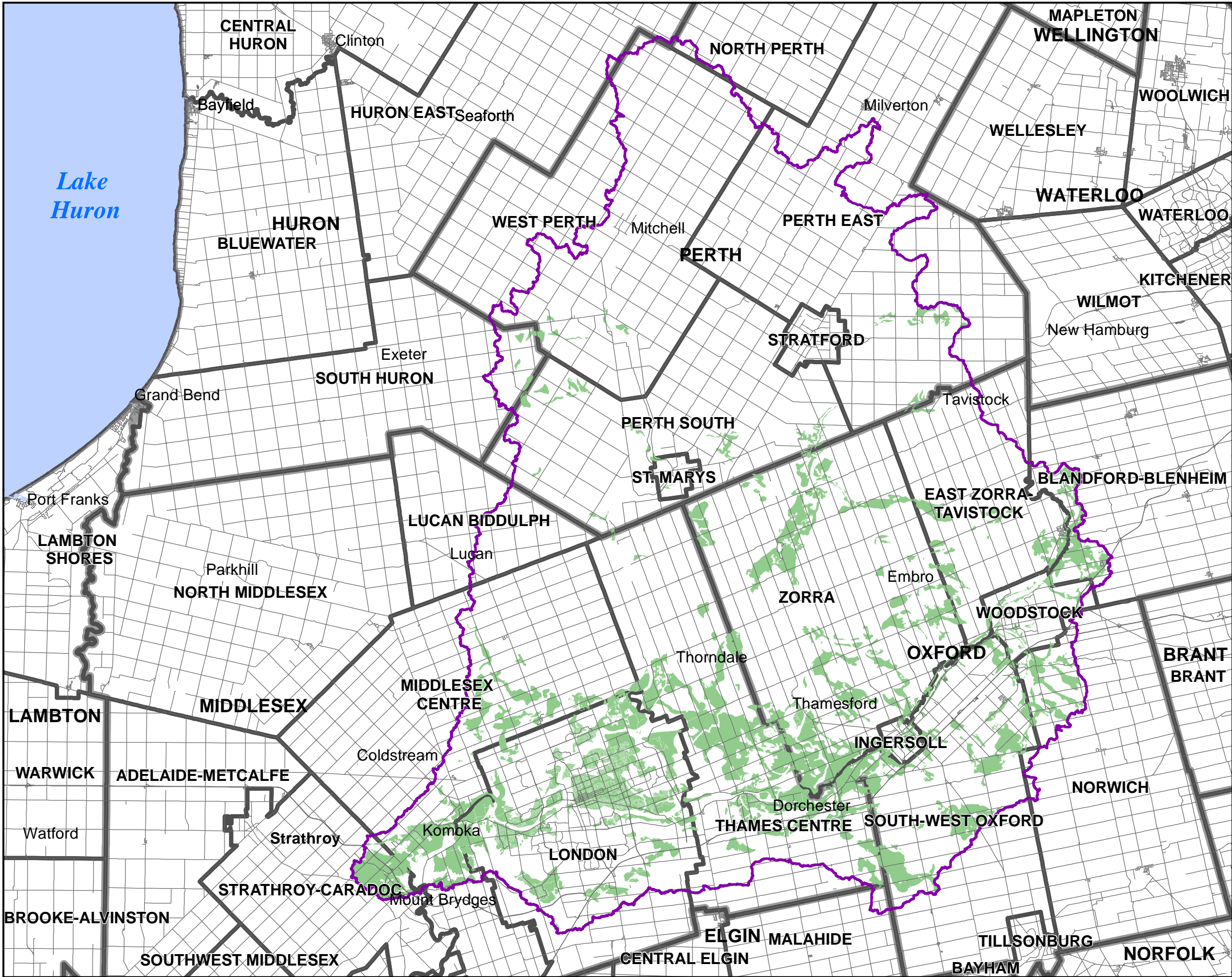
Impervious Surface Area, LTVCA, 2014.  
Impervious Surface Area calculated only within those areas where an associated threat can exist (vulnerability score 6 or greater).

SGRA: Tier Three Water Budget and Local Area Risk Assessment, Thames Sydenham and Region Source Protection Region, Oxford County, St Marys, Stratford and St. Pauls, Matrix Solutions Inc. March 2014.

**DRINKING WATER**  
**SOURCE PROTECTION**  
ACT FOR CLEAN WATER

Thames-Sydenham  
and Region





**Map 7-2-26**  
**Percent Managed Lands**  
**in Significant Groundwater**  
**Recharge Area (SGRA) with**  
**Vulnerability Score = 6**

### Upper Thames River Source Protection Area Assessment Report

**Legend**

- Source Protection Area Boundary
- Percent\_Managed**
  - 0.0 - 40.0
  - 40.1 - 80.0
  - 80.1 - 100.0
- Municipal Boundaries
- County Boundaries

10 5 0 10 km

Map created by UTRCA, October 1, 2014.

Base mapping produced under license with the Ontario Ministry of Natural Resources. © 2010.

Source Protection Area Boundary provided by Ontario Ministry of the Environment, 2006.

Percent Managed Land, Livestock Density, TSR SPR, 2014. Percent Managed Land calculated only for those areas where an associated threat can exist; vulnerability score 6 or greater.

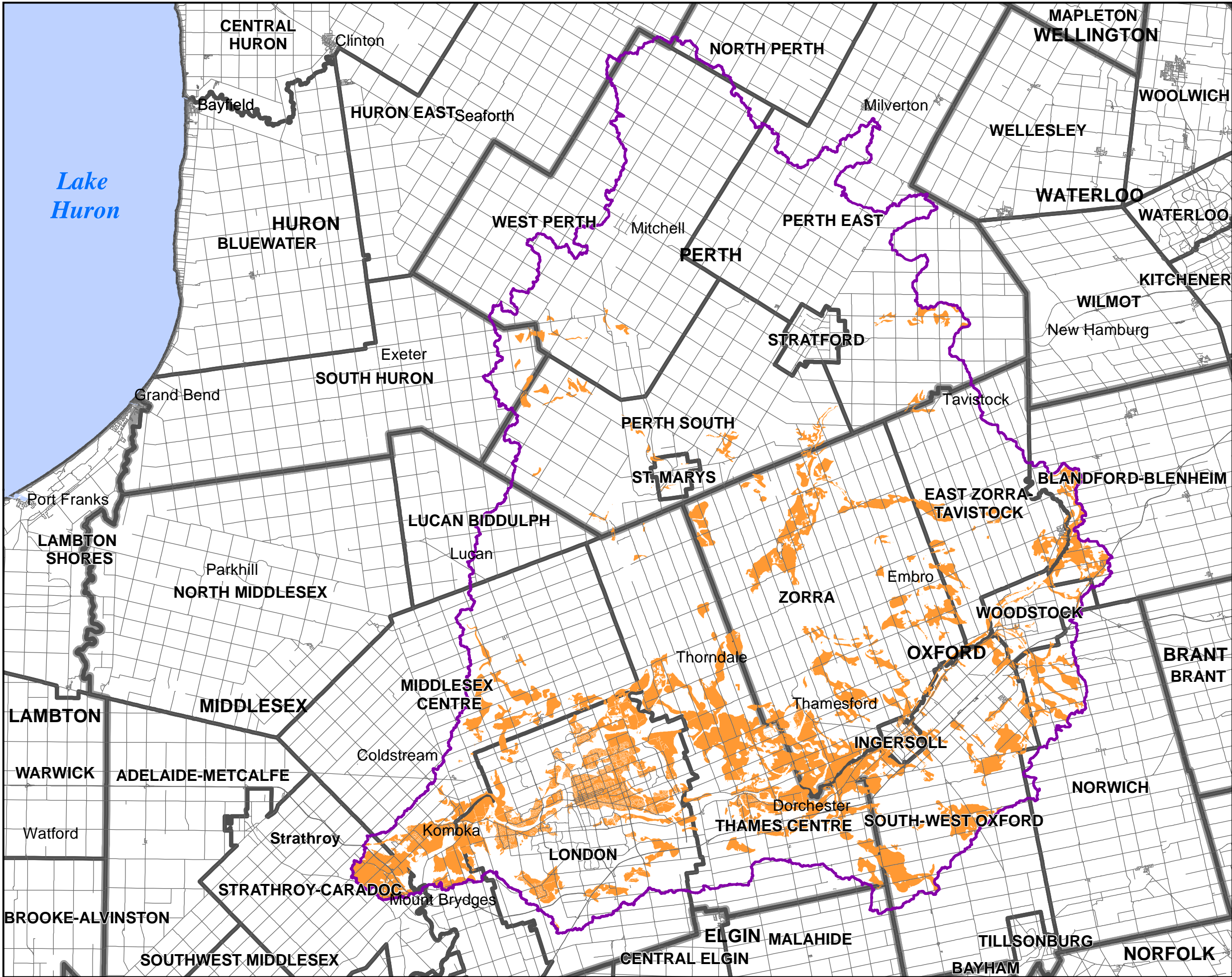
SGRA: Tier Three Water Budget and Local Area Risk Assessment, Thames Sydenham and Region Source Protection Region, Oxford County, St. Marys, Stratford and St. Pauls, Matrix Solutions Inc. March 2014.

DRINKING WATER  
SOURCE PROTECTION  
ACT FOR CLEAN WATER

Thames-Sydenham  
and Region

UPPER THAMES RIVER  
CONSERVATION AUTHORITY





**Map 7-2-27**  
**Livestock Density**  
**in Significant Groundwater**  
**Recharge Area (SGRA) with**  
**Vulnerability Score = 6**

**Upper Thames River**  
**Source Protection Area**  
**Assessment Report**

**Legend**

- Source Protection Area Boundary
- NU\_per\_Acre**
  - 0.00 - 0.50
  - 0.51 - 1.00
  - Greater than 1.00
- Municipal Boundaries
- County Boundaries

N  
W E  
S

10 5 0 10 km

Map created by UTRCA, October 2, 2017.

Base mapping produced under license with the Ontario Ministry of Natural Resources. © 2010.

Source Protection Area Boundary provided by Ontario Ministry of the Environment, 2006.

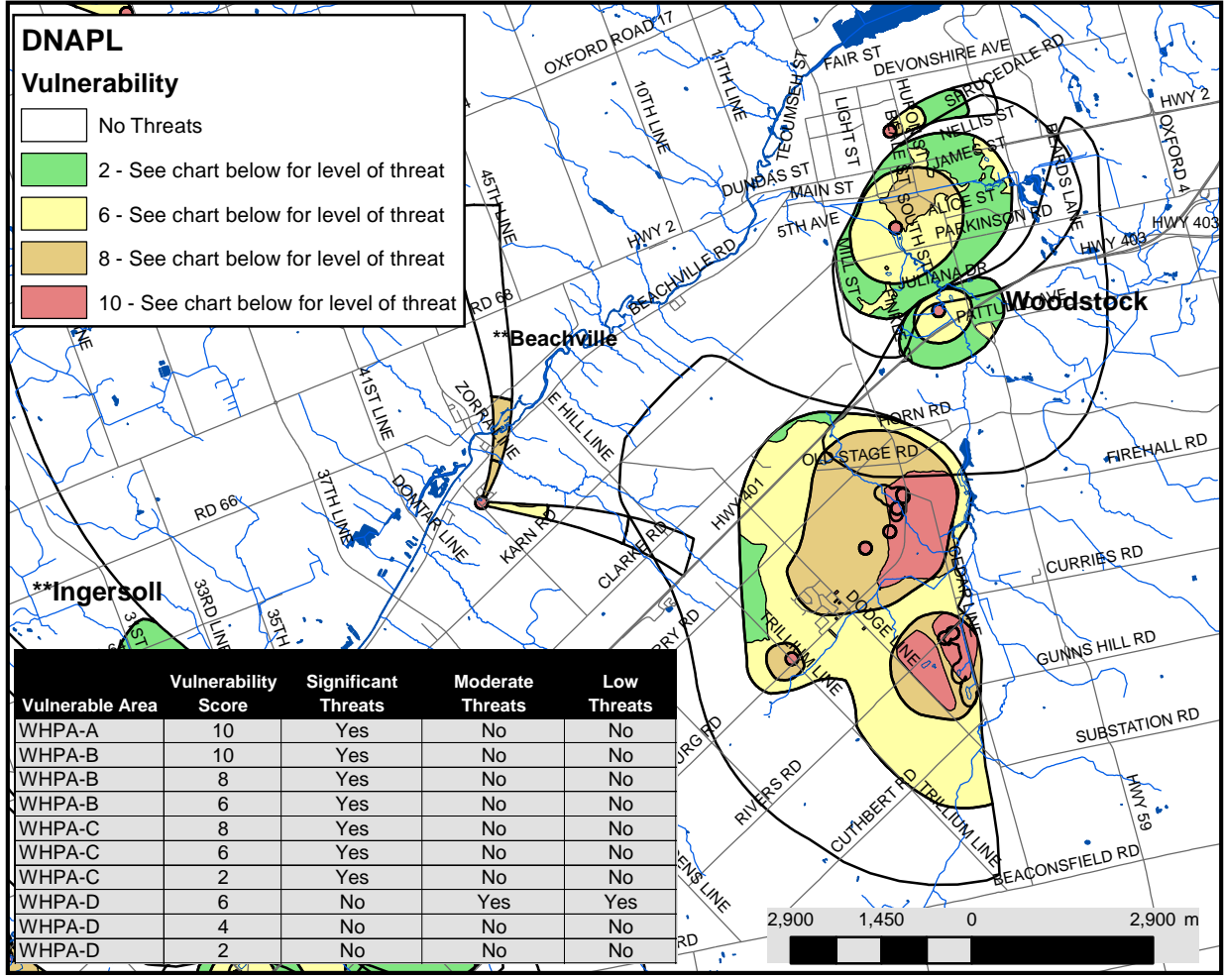
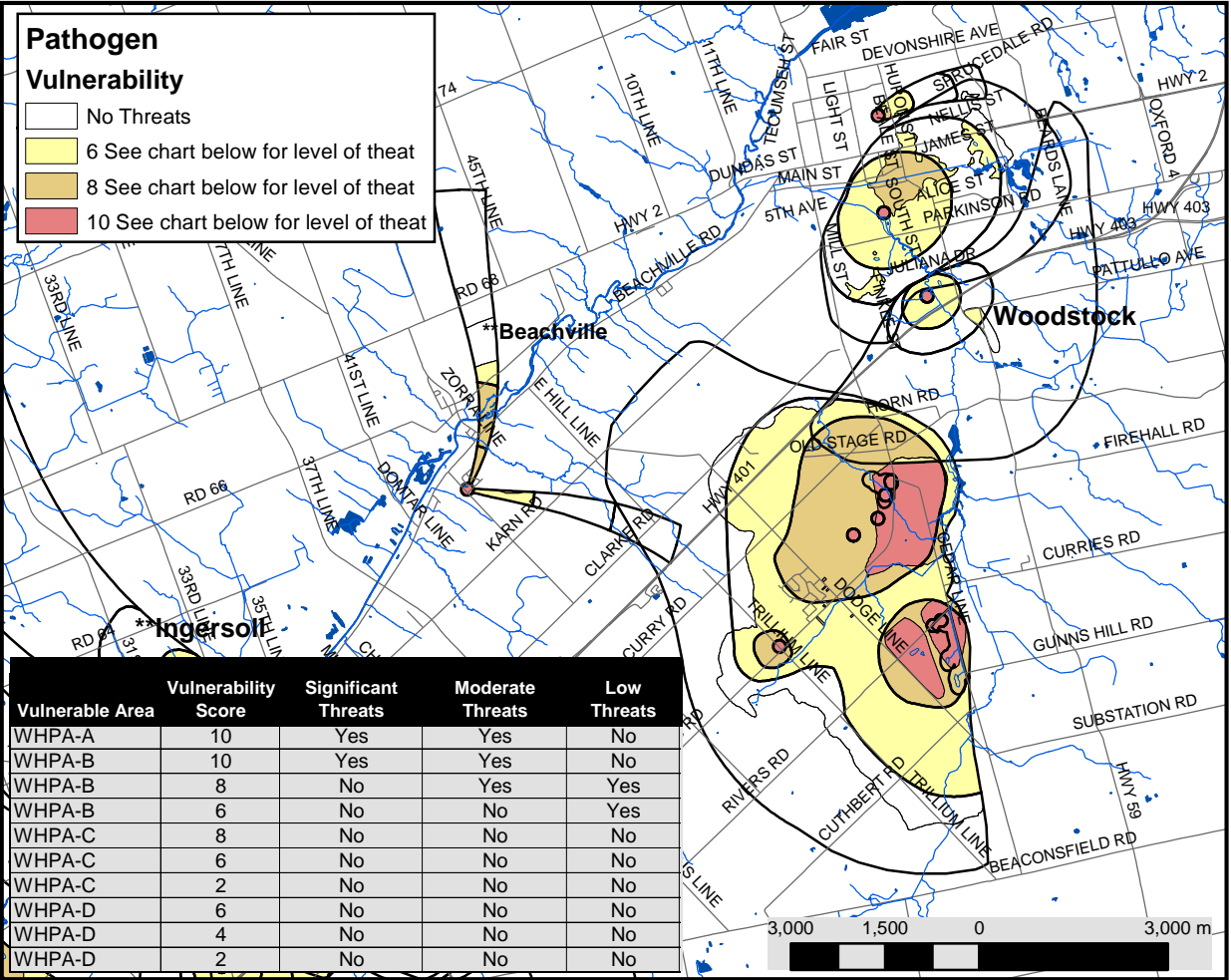
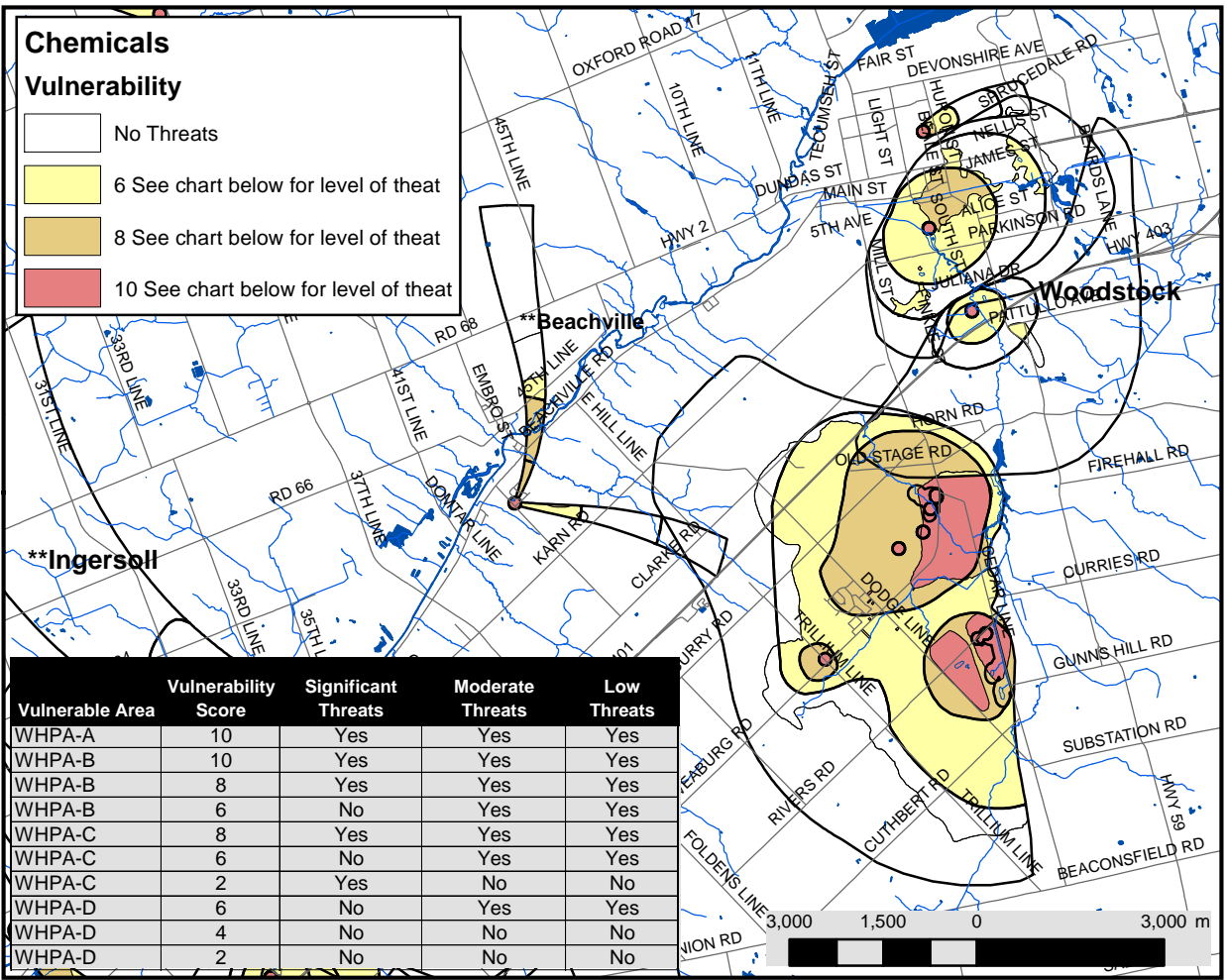
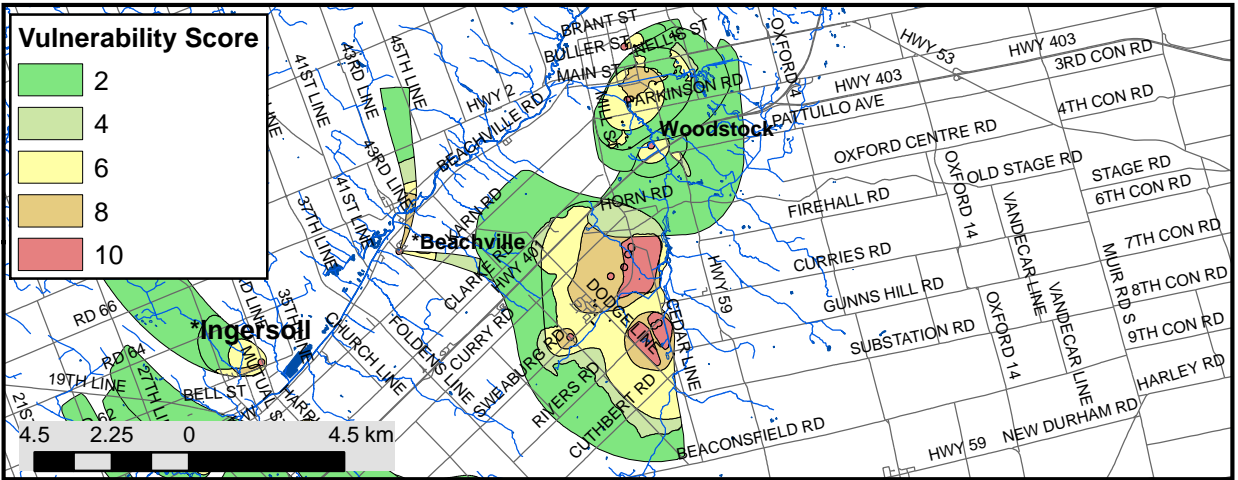
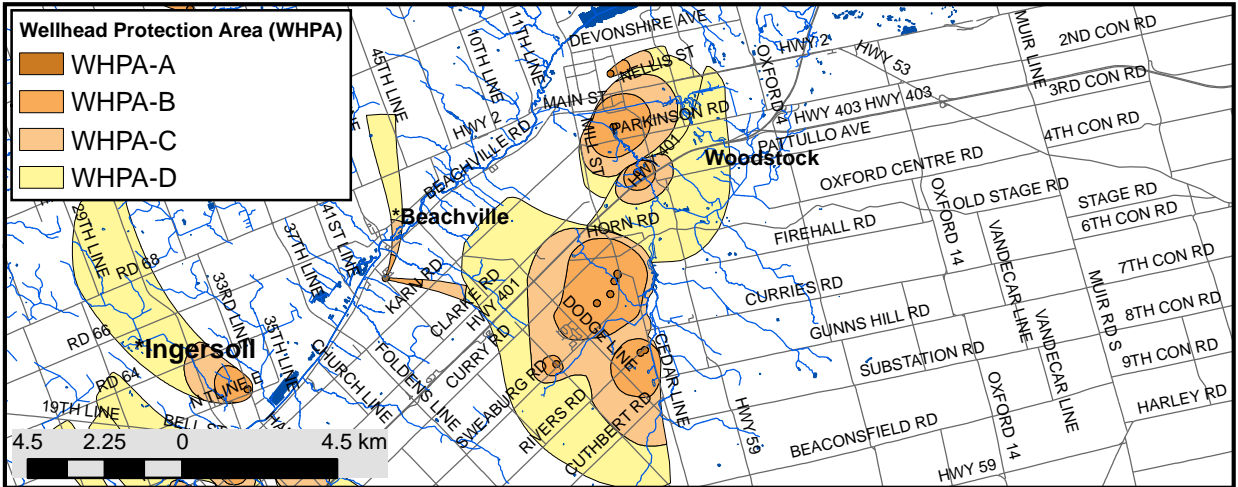
Livestock Density, TSR SPR, 2014.  
Livestock Density calculated only for those areas where an associated threat can exist; vulnerability score 6 or greater.

SGRA: Tier Three Water Budget and Local Area Risk Assessment, Thames Sydenham and Region Source Protection Region, Oxford County, St Marys, Stratford and St. Pauls, Matrix Solutions Inc. March 2014.

**DRINKING WATER**  
**SOURCE PROTECTION**  
ACT FOR CLEAN WATER

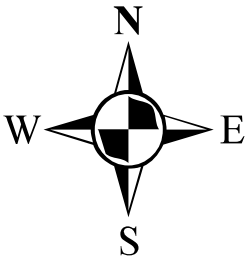
Thames-Sydenham  
and Region





# Map 7-3-17 Woodstock Areas Where Activities Related to Pathogens, Chemicals or Dense Nonaqueous Phase Liquids (DNAPL) are or would be Drinking Water Threats

## Upper Thames River Source Protection Area Assessment Report



Map created by UTRCA, October 6, 2014.

Base mapping produced under license with the Ontario Ministry of Natural Resources. © 2010.

Activities Related to Chemicals, DNAPLs and Pathogens - as required by Rules 8 and 9 of the Technical Rules: Assessment Report (MOE, proposed amendments August 2009) and as listed in the Tables of Drinking Water Threats (MOE, Clean Water Act, 2006).

Wellhead Protection Areas and Vulnerability Assessment - as contained in the approved Upper Thames River Source Protection Area - Amended Proposed Assessment Report Revised - August 12, 2011, including Sweaburg Area Groundwater Vulnerability Amendment, Technical Memorandum, ARL Groundwater Resources, Ltd, March 24, 2014

WHPA, Threats Information - Upper Thames River Source Protection Area, Woodstock - Rural Well Systems Threats Assessment, County of Oxford, Prepared by the County of Oxford, Community and Strategic Planning Office, June 24, 2010.

Note: \*Beachville see Maps 4-1-8, and \*Ingersoll see Map 4-1-11 for complete Vulnerability and WHPA boundaries.  
\*\*Beachville see Map 7-3-8 and \*\*Ingersoll see Map 7-3-11 for Drinking Water Threats information.