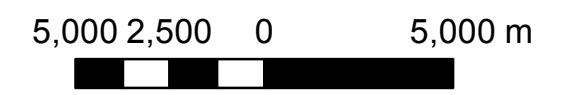
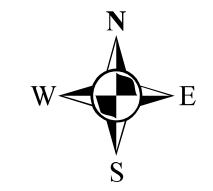


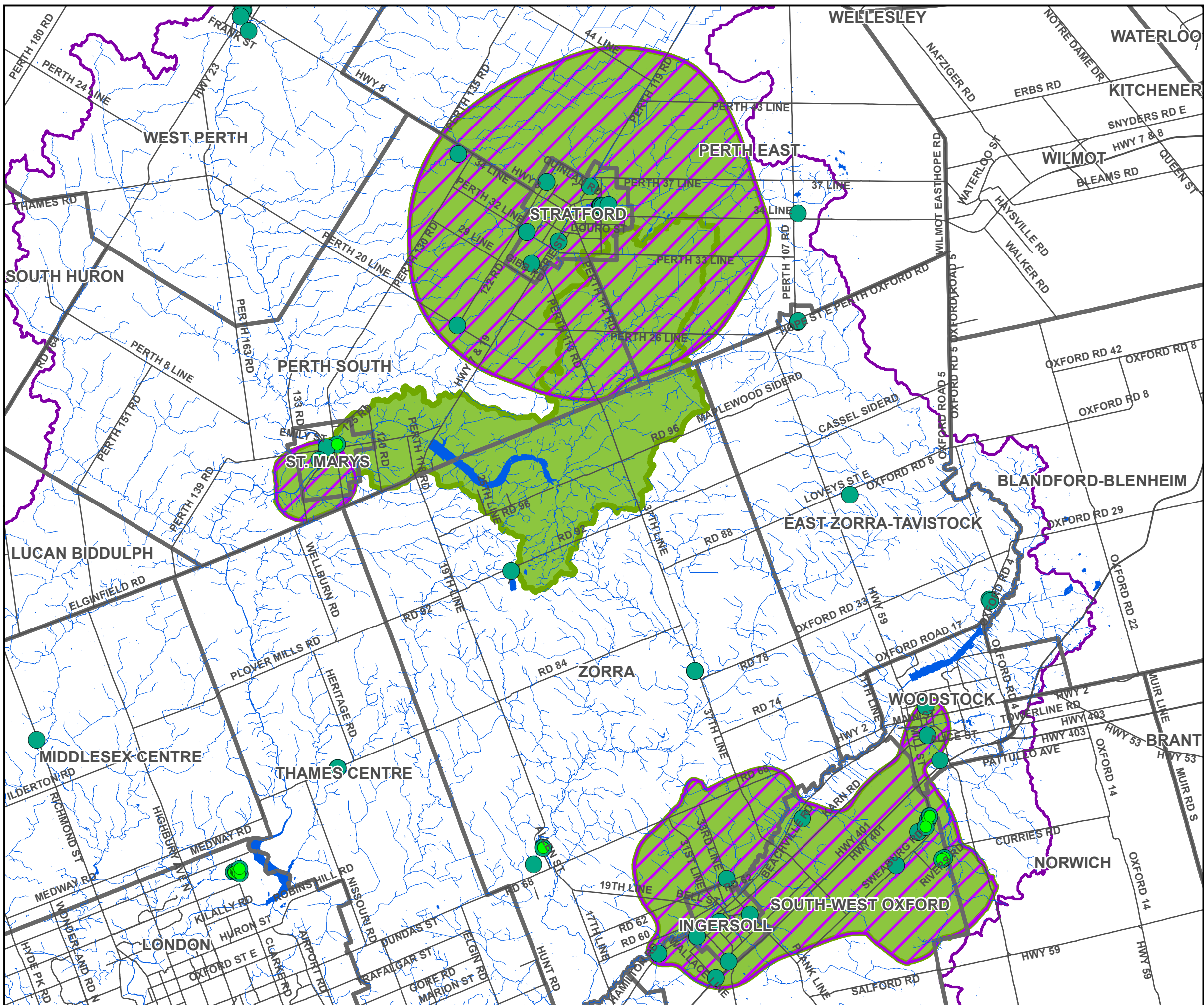
# Map 3-7 Local Area Water Quantity Risk Level

## Upper Thames River Source Protection Area Assessment Report



**Legend**

- Municipal Boundaries
- Source Protection Region Boundary
- Wells (Groundwater Under Direct Influence)
- Wells
- WHPA-Q1 and Q2
- Local Area Boundary**
- Local Area Boundary
- Local Area - Low Risk



Map created by UTRCA, November 13, 2014.

Base mapping produced under license with the Ontario Ministry of Natural Resources. © 2011.

Tier Three Water Budget and Local Area Risk Assessment, Town of St. Marys, Matrix Solutions, March, 2014.

Tier Three Water Budget and Local Area Risk Assessment, City of Stratford and Town of St. Pauls, Matrix Solutions, March, 2014.

Tier Three Water Budget and Local Area Risk Assessment, Oxford County, Matrix Solutions, March, 2014.

**DRINKING WATER SOURCE PROTECTION**  
ACT FOR CLEAN WATER

Thames-Sydenham and Region